

WAAS CH 45640 W29A	APP CRS 289°	Rwy Idg 7001 TDZE 4683 Apt Elev 4716
--	------------------------	---

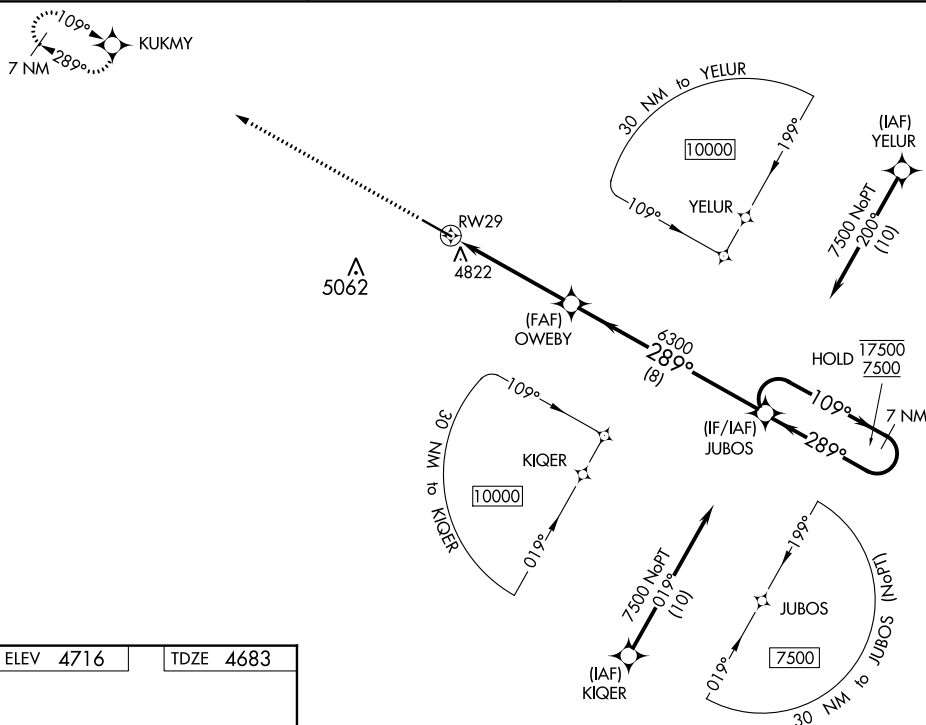
RNAV (GPS) RWY 29
COLORADO PLAINS RGNL (AKO)

RNP APCH.

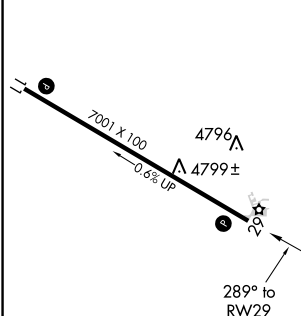
T For uncompensated Baro-VNAV systems, LNAV/VNAV
A NA below -22°C or above 54°C.

MISSED APPROACH: Climb to 7500 to KUKMY and hold.

ASOS 135.475	DENVER CENTER 133.95 317.55	UNICOM 122.8 (CTAF) 0
------------------------	---------------------------------------	---------------------------------



ELEV 4716		TDZE 4683
-----------	--	-----------



MIRL Rwy 11-29 **L**
REIL Rwys 11 and 29

7500 KUKMY VGS1 and RNAV glidepath not coincident (VGS1 Angle 3.00/TCH 43). 7 NM Holding Pattern

*LNAV only

OWEBY 6300

RW29

1.2 NM to RW29

3.8 NM

8 NM

JUBOS

109°

289°

17500

7500

GP 3.00° TCH 52