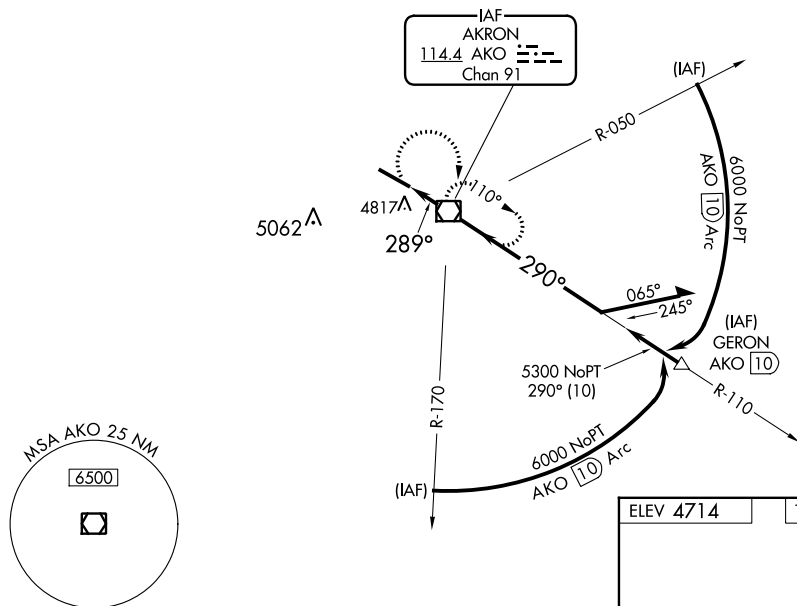


VOR RWY 29  
COLORADO PLAINS RGNL (AKO)



ASOS <b>135.475</b>	DENVER CENTER <b>133.95 317.55</b>	UNICOM <b>122.8 (CTAF) 0</b>
------------------------	---------------------------------------	---------------------------------



6100

AKO

VGSI and descent angles not coincident  
(VGSI Angle 3.00/TCH 43).

AKO  
VOR/DME

Remain  
within 10 NM

110°

6000

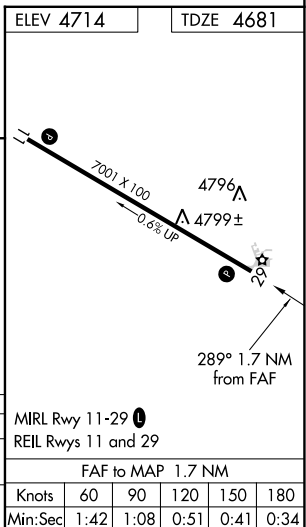
≤ 3.22°  
TCH 50

289°

5300

1.7 NM

CATEGORY	A	B	C	D
S-29	5120-1	439 (500-1)	5120-1¼ 439 (500-1¼)	5120-1½ 439 (500-1½)
CIRCLING	5160-1 446 (500-1)	5180-1 466 (500-1)	5300-1½ 586 (600-1½)	5300-2 586 (600-2)



SW-1, 31 DEC 2020 to 28 JAN 2021

SW-1, 31 DEC 2020 to 28 JAN 2021