

VOR/DME BWS

109.6

Chan 33

APP CRS

038°

Rwy Idg

9207

TDZE

4151

Apt Elev

4199

ALAMOGORDO-WHITE SANDS RGNL (A.L.M.)

VOR RWY 4

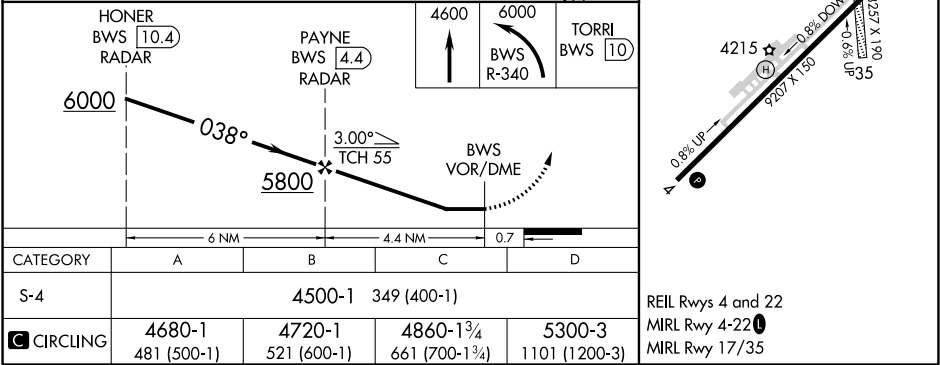
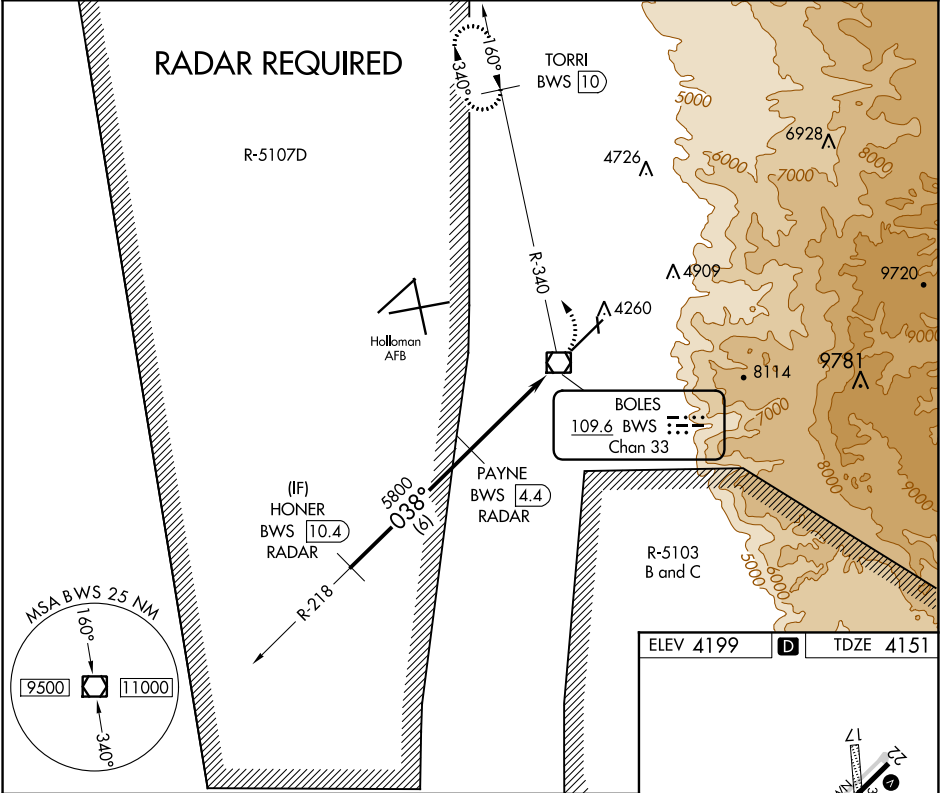
▼

▲

Circling NA to Rwys 17 and 35. Circling NA southeast of Rwy 4-22. DME required. Civil aircraft require ATC clearance prior to entering Restricted Area 5107D. Procedure NA when Holloman Approach Control closed.

MISSED APPROACH: Climb to 4600 then climbing left turn to 6000 on BWS VOR/DME R-340 to TORRI/BWS 10 DME and hold.

AWOS-3 127.825	HOLLOMAN APP CON ★ 120.6 269.225	ALBUQUERQUE CENTER 132.65 257.6 (When tower closed)	UNICOM 122.8 (CTAF) 0
-------------------	-------------------------------------	---	--------------------------



SW-1, 31 DEC 2020 to 28 JAN 2021

SW-1, 31 DEC 2020 to 28 JAN 2021