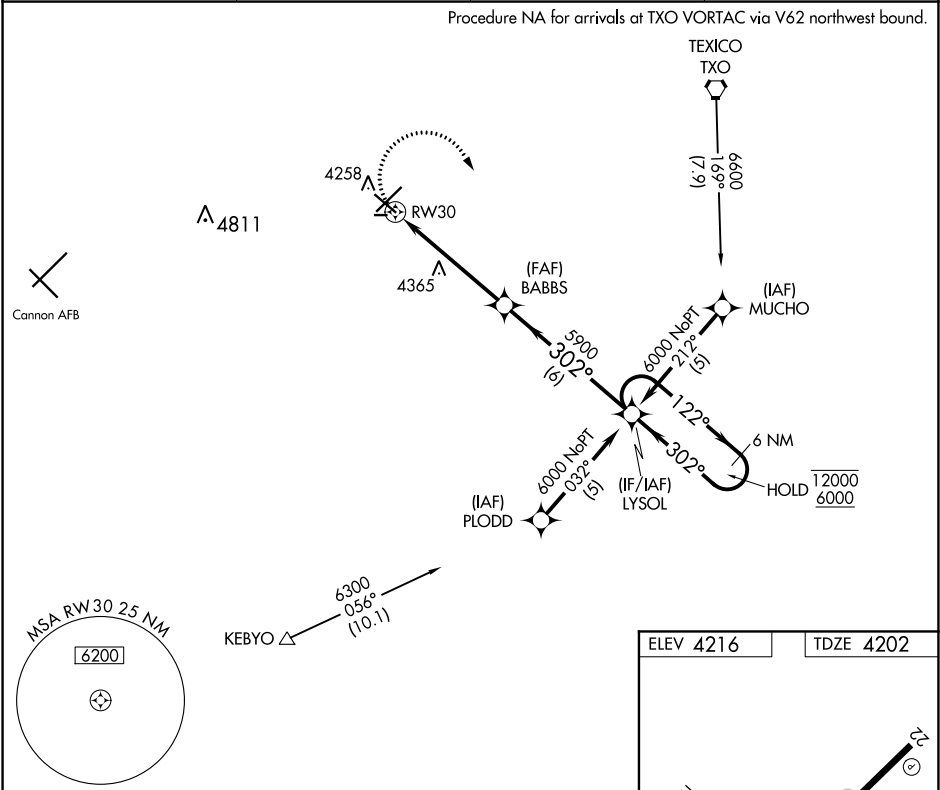


APP CRS
302°

Rwy Idg
TDZE
Apt Elev
5697
4202
4216

RNAV (GPS) RWY 30
CLOVIS MUNI (CVN)

RNP APCH. ▼ CAUTION: Cannon AFB 12 NM WSW, heavy USAF fighter traffic.		MISSED APPROACH: Climbing right turn to 6000 direct LYSOL and hold.	
AWOS-3PT 135.375	CANNON APP CON 118.425 352.1	CLNC DEL 119.0	UNICOM 122.8 (CTAF) 0



<div>6000</div> <div>LYSOL</div>		<div>VGSI and descent angles not coincident (VGSI Angle 3.00/TCH 75)</div>	
<div>1.1 NM to RW30</div> <div>3.05° TCH 50</div> <div>1.1 NM</div> <div>4 NM</div> <div>6 NM</div>		<div>LYSOL</div> <div>6 NM Holding Pattern</div> <div>122° → 12000</div> <div>← 302° 6000</div>	
<div>CATEGORY</div>		A	B
<div>LNVA MDA</div>		4620-1	418 (500-1)
<div>C CIRCLING</div>		4680-1	464 (500-1)
		4700-1½ 484 (500-1½)	4820-2 604 (700-2)

ELEV 4216

TDZE 4202

REIL Rwy 12 and 30
MIRL Rwy 4-22 and 12-30 **0**