

WAAS

CH **97300**

W04A

APP CRS

037°

Rwy Idg

7200

TDZE

4205

Apt Elev

4216

RNAV (GPS) RWY 4

CLOVIS MUNI (CVN)

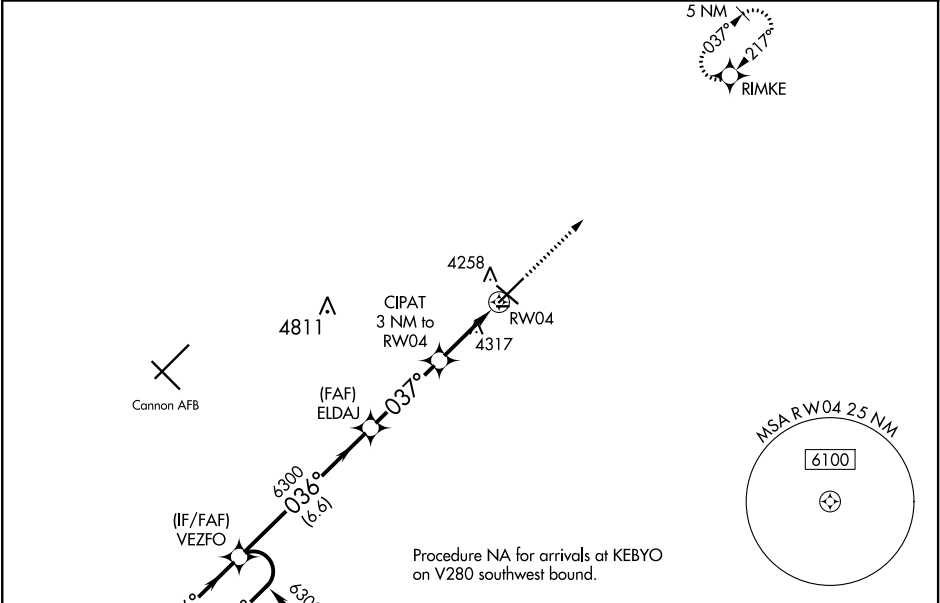
⚠ For uncompensated Baro-VNAV systems, LNAV/VNAV NA below -23°C (-9°F) or above 49°C (121°F). DME/DME RNP-0.3 NA. When local altimeter setting not received, use Cannon AFB altimeter setting and increase all DA and MDA 40 feet; increase LNAV Cat C/D visibility ¼ mile. For inop MALSR, increase LNAV/VNAV all Cats visibility to ¾ mile. For inop MALSR when using Cannon AFB altimeter setting, increase LNAV Cat C/D visibility to 1 ¾ mile. Baro-VNAV and VDP NA when using Cannon AFB altimeter setting.

MALSR

MISSED APPROACH:

Climb to 6000 direct RIMKE and hold.

AWOS-3PT 135.375	CANNON APP CON 118.425 352.1	CLNC DEL 119.0	UNICOM 122.8 (CTAF) 0
----------------------------	--	--------------------------	---------------------------------



7 NM Holding Pattern

GP 3.00°

TCH 53

VEZFO

ELDAJ

CIPAT 3 NM to RW04

*1.2 NM to RW04

*LNAV only

*5200

6.6 NM

3.4 NM

1.8 NM

1.2 NM

6000

RIMKE

CATEGORY	A	B	C	D
LPV DA		4405-½	200 (200-½)	
LNAV/VNAV DA		4455-½	250 (300-½)	
LNAV MDA	4640-½	435 (500-½)	4640-¾	435 (500-¾)
CIRCLING	4680-1	464 (500-1)	4700-1½ 484 (500-1½)	4820-2 604 (700-2)

REIL Rwy 12 and 30

MIRL Rwy 4-22 and 12-30 0

ELEV 4216

TDZE 4205

037° to RW04