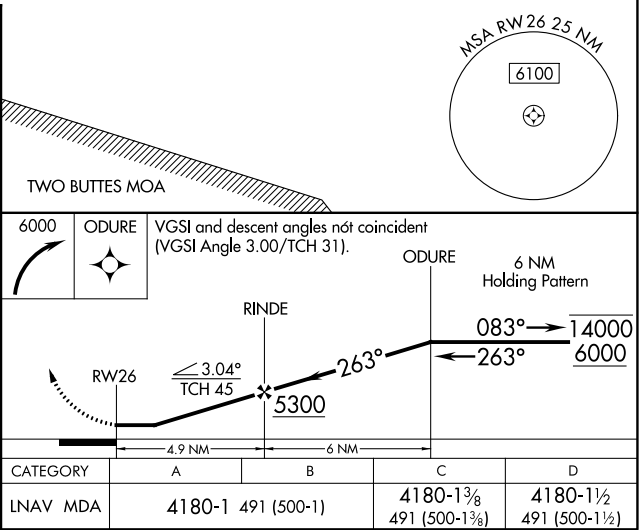
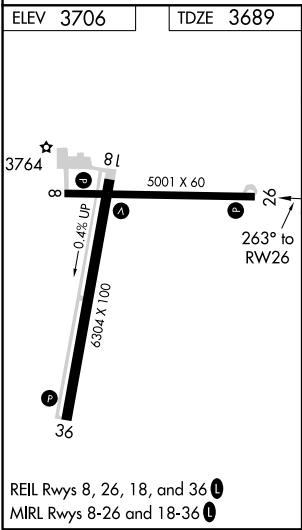
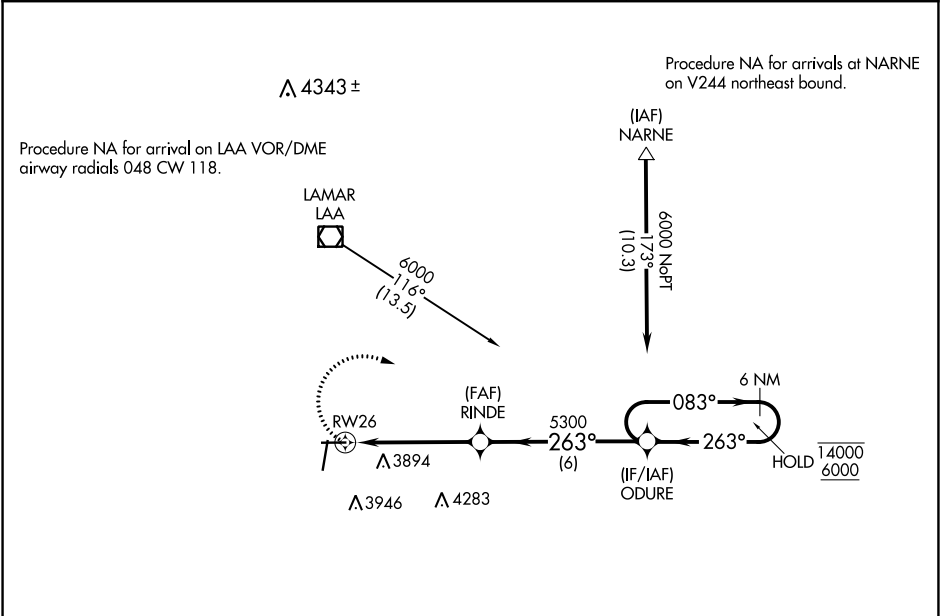


APP CRS	Rwy Idg	5001
263°	TDZE	3689
	Apt Elev	3706

RNAV (GPS) RWY 26  
SOUTHEAST COLORADO RGNL (L.A.A)

RNP APCH.	MISSED APPROACH: Climbing right turn to 6000 direct ODURE and hold.
<div><div></div><div>Procedure NA at night. Rwy 26 helicopter visibility reduction below 1 SM NA.</div></div>	

ASOS 135.625	DENVER CENTER 133.4 377.175	UNICOM 122.8 (CTAF) 0
-----------------	--------------------------------	--------------------------



LAMAR, COLORADO	SOUTHEAST COLORADO RGNL (L.A.A)
Orig-D 21MAY20	RNAV (GPS) RWY 26
38°04'N-102°41'W	

SW-1, 31 DEC 2020 to 28 JAN 2021

SW-1, 31 DEC 2020 to 28 JAN 2021