

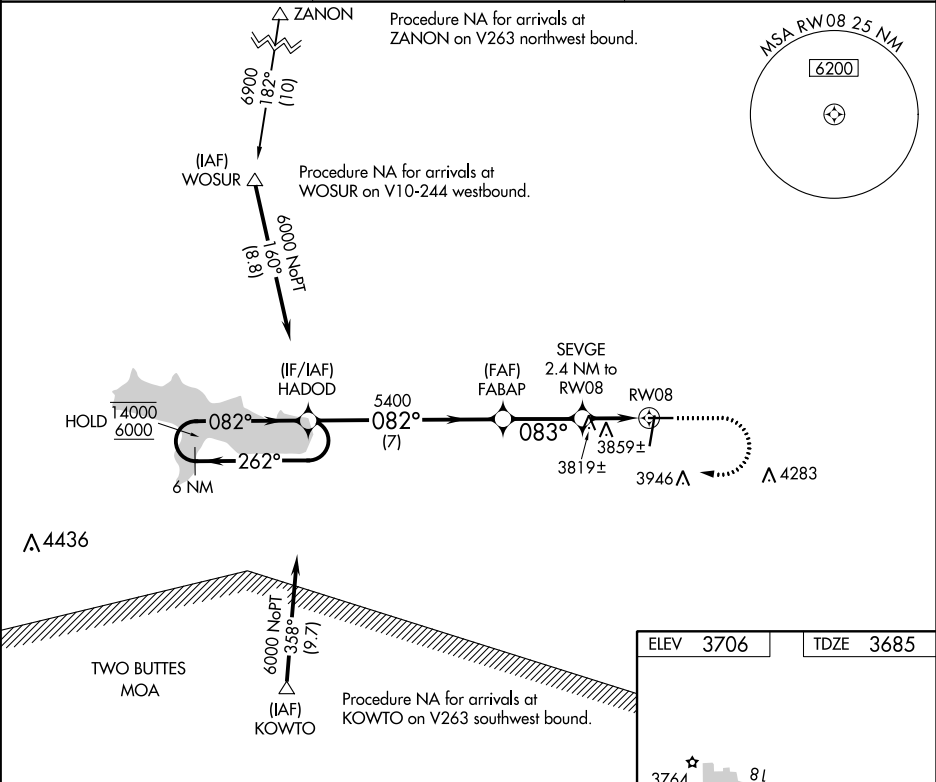
WAAS CH <b>97429</b> <b>W08A</b>	APP CRS <b>083°</b>	Rwy Idg TDZE Apt Elev	<b>5001</b> <b>3685</b> <b>3706</b>
--	------------------------	-----------------------------	---

RNAV (GPS) RWY 8

SOUTHEAST COLORADO RGNL (LAA)

RNP APCH.	MISSED APPROACH: Climb to 4700 then climbing right turn to 6000 direct HADOD and hold.
<div><div>▼</div><div>▲</div></div> Procedure NA at night. Rwy 8 helicopter visibility reduction below 1 SM NA.	

ASOS <b>135.625</b>	DENVER CENTER <b>133.4 377.175</b>	UNICOM <b>122.8 (CTAF) 0</b>
------------------------	---------------------------------------	---------------------------------



VGSIs and descent angles not coincident (VGSi Angle 3.00/TCH 30).			
6 NM Holding Pattern	HADOD	FABAP	SEVGE 2.4 NM to RW08
14000 6000	262° 082°	082° 083°	3.00° TCH 45
7 NM 2.9 NM 2.4 NM			
CATEGORY	A	B	C D
LP MDA	4080-1	395 (400-1)	4080-1½ 395 (400-1½)
LNAV MDA	4120-1	435 (500-1)	4120-1¼ 435 (500-1¼)

