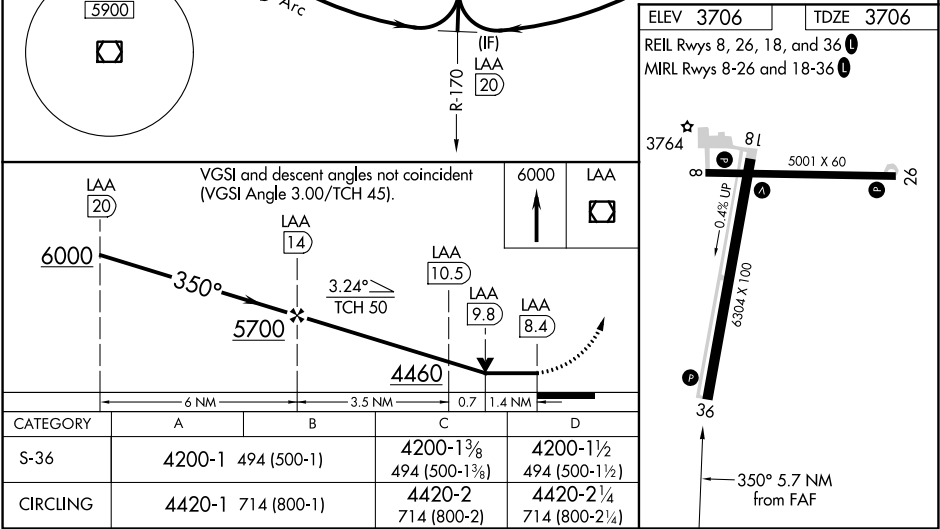
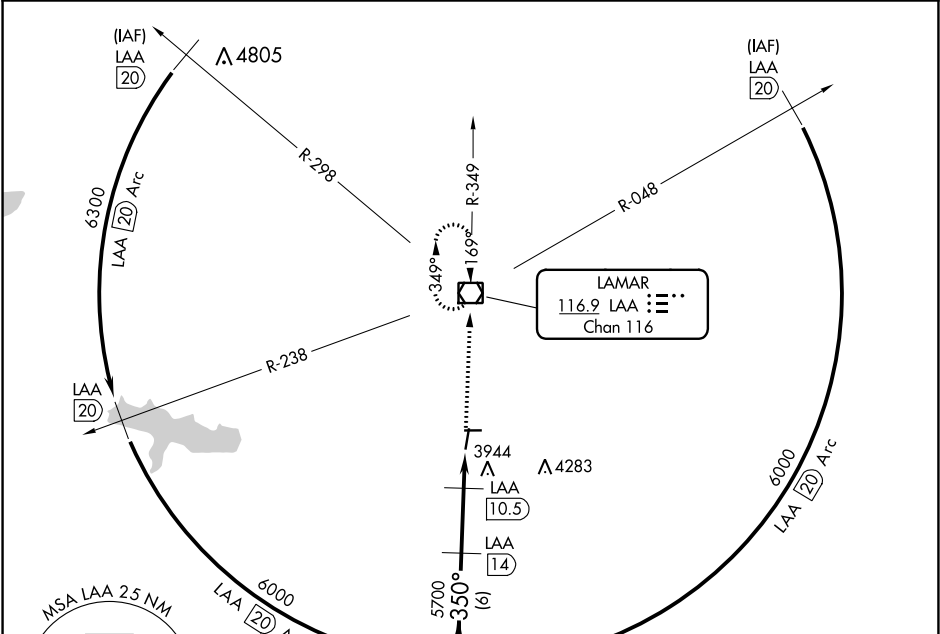


VOR/DME LAA	APP CRS	Rwy Idg	6304
116.9	350°	TDZE	3706
Chan 116		Apt Elev	3706

VOR RWY 36
SOUTHEAST COLORADO RGNL (LAA)

DME required.	MISSED APPROACH: Climb to 6000 direct LAA VOR/DME and hold.
<div><div></div><div></div></div> <div>Circling Rwy 8, 26 NA at night. Rwy 36 helicopter visibility reduction below 3/4 SM NA.</div>	

ASOS 135.625	DENVER CENTER 133.4 377.175	UNICOM 122.8 (CTAF) 0
-----------------	--------------------------------	--------------------------



SW-1, 31 DEC 2020 to 28 JAN 2021

SW-1, 31 DEC 2020 to 28 JAN 2021