

LOC I-FNL	APP CRS	Rwy Idg	8500
109.5	331°	TDZE	5016
		Apt Elev	5016

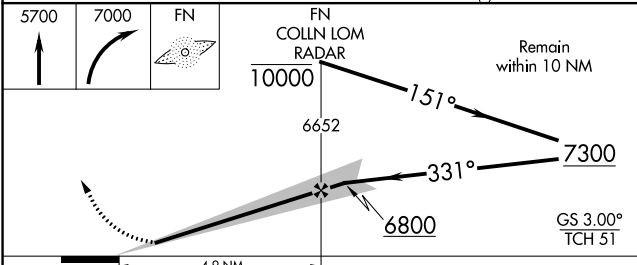
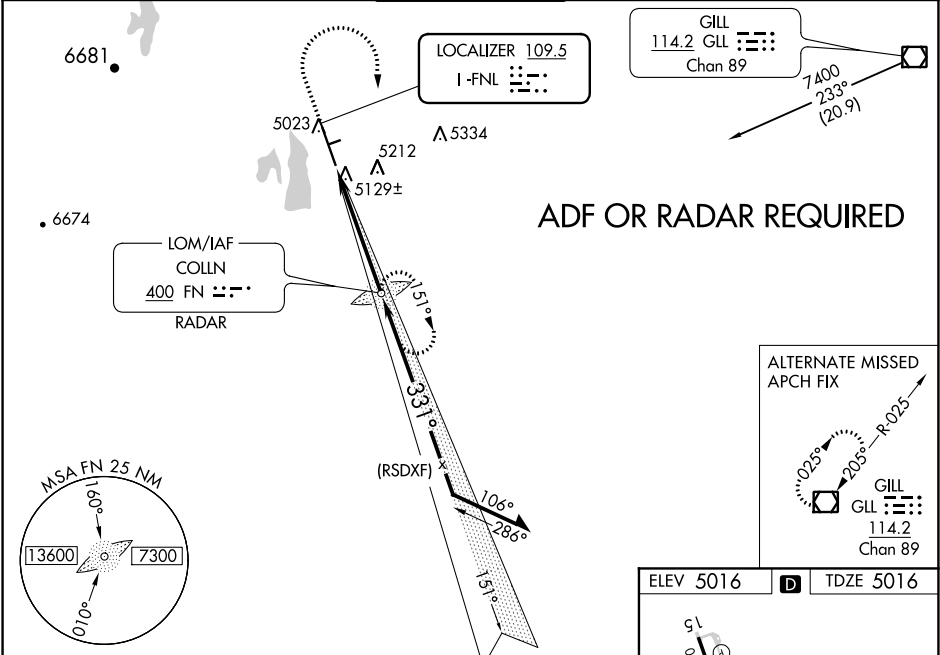
ILS or LOC RWY 33  
NORTHERN COLORADO RGNL (F'NL)

**NA** Circling to Rwy 6/24 NA at night. ADF required.  
When local altimeter setting not received, use Denver Intl altimeter setting and increase all DA 147 feet and all MDA 160 feet.  
Increase S-ILS 33 visibility all Cats ¼ SM, S-LOC 33 Cat C/D visibility ½ SM, and Circling Cat C/D visibility ½ SM.  
For inop ALS, when using Denver Intl altimeter setting increase S-ILS 33 visibility all Cats to 1¼ mile.

MALSR

MISSED APPROACH: Climb to 5700 then climbing right turn to 7000 direct COLLN LOM/RADAR and hold.

ATIS 135.075	DENVER APP CON 134.85 251.125	NOCO TOWER★ 118.4 (CTAF) 0	GND CON 121.65	CLNC DEL 120.25 (When twr closed)
-----------------	----------------------------------	-------------------------------	-------------------	---



CATEGORY	A	B	C	D
S-ILS 33	5216-½ 200 (200-½)			
S-LOC 33	5380-½ 364 (400-½)		5380-¾ 364 (400-¾)	
CIRCLING	5500-1 484 (500-1)	5580-1 564 (600-1)	5580-1½ 564 (600-½)	5760-2½ 744 (600-2½)

