

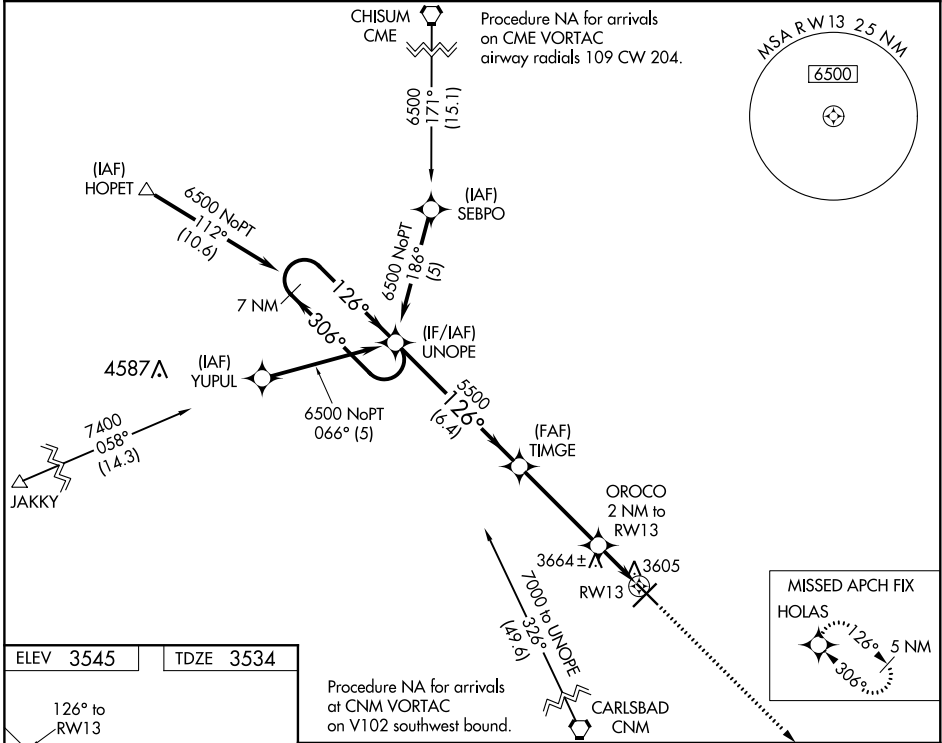
WAAS CH <b>86535</b> <b>W13A</b>	APP CRS <b>126°</b>	Rwy Idg <b>6132</b> TDZE <b>3534</b> Apt Elev <b>3545</b>
--	------------------------	---

RNAV (GPS) RWY 13  
ARTESIA MUNI (ATS)

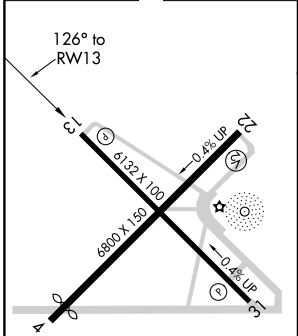
**⚠** For uncompensated Baro-VNAV systems, LNAV-VNAV NA below -22°C (-7°F) or above 54°C (130°F).  
DME/DME RNP-0.3 NA.

MISSED APPROACH: Climb to 5900 direct HOLAS and hold.

AWOS-3 <b>126.725</b>	ROSWELL APP CON * <b>119.6 239.0</b>	UNICOM <b>123.075 (CTAF) 0</b>
--------------------------	---	-----------------------------------



ELEV <b>3545</b>	TDZE <b>3534</b>
------------------	------------------



7 NM Holding Pattern UNOPE		TIMGE		5900 HOLAS	
6500 ← 306°		126° →		*1.1 NM to RWY 13	
GP 3.00° TCH 42		5500		*LNAV only	
6.4 NM		4 NM		0.9 NM	
CATEGORY		A		B	
LPV DA		3734-3/4		200 (200-3/4)	
LNAV/VNAV DA		3784-7/8		250 (300-7/8)	
LNAV MDA		3920-1		3920-1 1/8 386 (400-1 1/8)	
CIRCLING		3980-1 435 (500-1)		4080-1 1/2 535 (600-1 1/2)	
		445 (500-1)		4240-2 1/4 695 (700-2 1/4)	

SW-1, 31 DEC 2020 to 28 JAN 2021

SW-1, 31 DEC 2020 to 28 JAN 2021