

WAAS CH <b>82535</b> <b>W31A</b>	APP CRS <b>306°</b>	Rwy Idg <b>6132</b> TDZE <b>3520</b> Apt Elev <b>3545</b>
--	------------------------	---

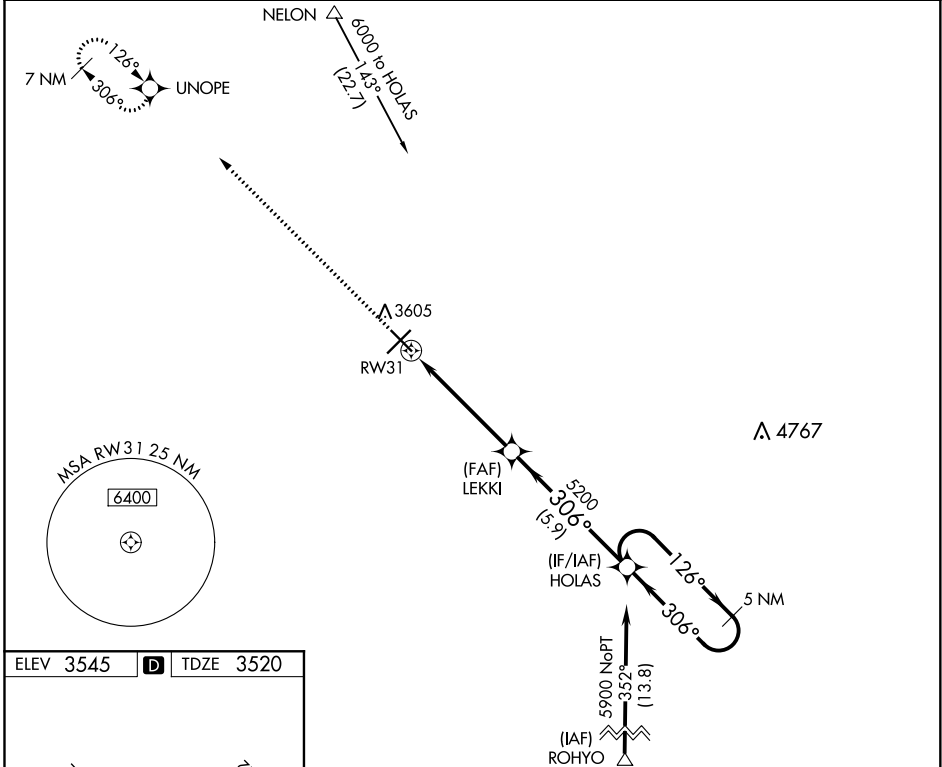
RNAV (GPS) RWY 31

ARTESIA MUNI (ATS)

For uncompensated Baro-VNAV systems, LNAV/VNAV NA below -22°C (-7°F) or above 52°C (125°F). DME/DME RNP-0.3 NA.

MISSED APPROACH: Climb to 6500 direct UNOPE and hold.

AWOS-3 <b>126.725</b>	ROSWELL APP CON * <b>119.6 239.0</b>	UNICOM <b>123.075 (CTAF) 1</b>
--------------------------	---	-----------------------------------



ELEV 3545

D

TDZE 3520

MIRL Rwy 4-22 and 13-31 1

<div><div>6500 UNOPE</div><div><div>* LNAV only.</div><div>* 1 NM to RW31</div></div></div>				
<div><div>LEKKI 5200</div><div>HOLAS 5200</div><div>5900</div><div>GP 3.00° TCH 50</div></div>				
<div><div>1 NM</div><div>4.2 NM</div><div>5.9 NM</div></div>				
CATEGORY	A	B	C	D
LPV DA	3720-¾ 200 (200-¾)			
LNAV/VNAV DA	3809-1 289 (300-1)			
LNAV MDA	3880-1 360 (400-1)			
CIRCLING	3980-1 435 (500-1)	4000-1 455 (500-1)	4080-1½ 535 (600-1½)	4240-2¼ 695 (700-2¼)

SW-1, 31 DEC 2020 to 28 JAN 2021

SW-1, 31 DEC 2020 to 28 JAN 2021