

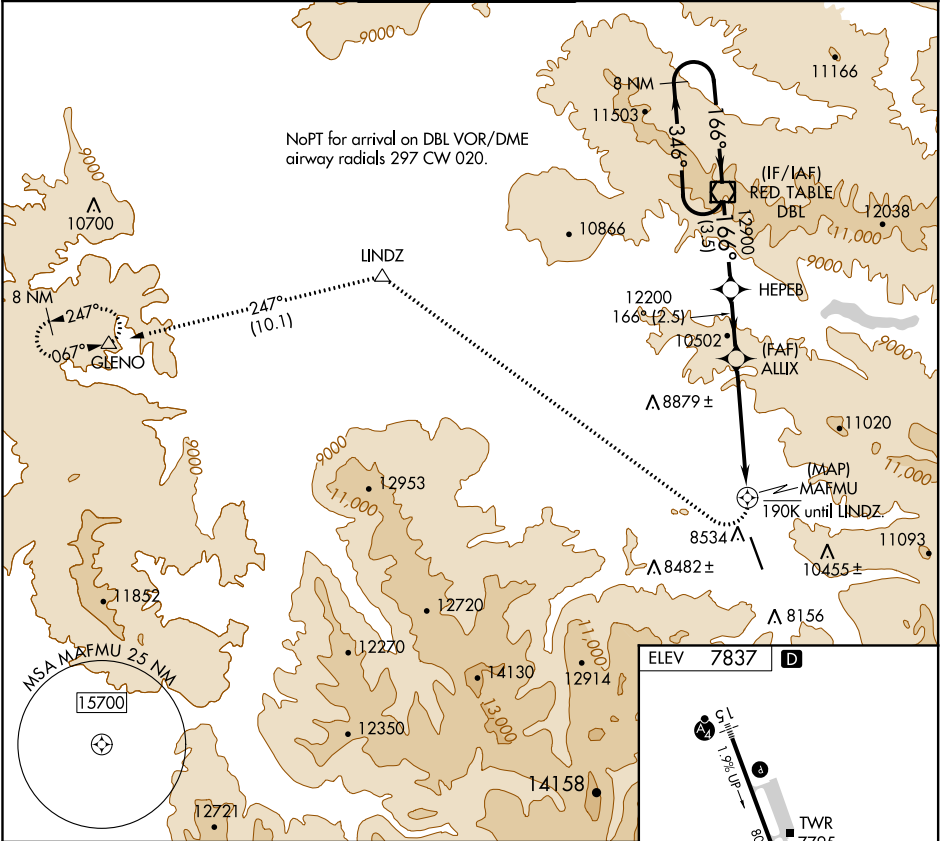
| | | |
|---------|----------|------|
| APP CRS | Rwy ldg | N/A |
| 166° | TDZE | N/A |
| | Apt Elev | 7837 |

RNAV (GPS)-F

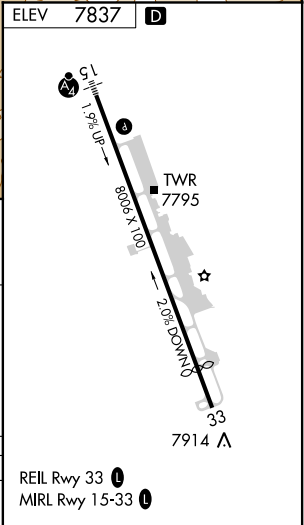
ASPEN-PITKIN COUNTY/SARDY FIELD (ASE)

| | | |
|--|---|---|
| | When local altimeter setting not received, procedure NA. DME/DME RNP-0.3 NA. Visibility reduction by helicopters NA. Procedure NA at night. | MISSED APPROACH: Climbing right turn to 14000 direct LINDZ and on track 247° to GLENO and hold. |
|--|---|---|

| | | | | | |
|-------|-----------------|-----------------------|---------|----------|--------|
| ATIS | ASPEN APP CON * | ASPEN TOWER * | GND CON | CLNC DEL | UNICOM |
| 120.4 | 123.8 288.3 | 118.85 (CTAF) 0 288.3 | 121.9 | 123.75 | 122.95 |



| | | | |
|--|-------------------------------------|--|-----------------------|
| VGSi and descent angles not coincident (VGSi Angle 3.50/TCH 56). | | | |
| 8 NM Holding Pattern DBL VOR/DME HEPEB | | | |
| 13700 ← 346° → 166° → 12900 12200 * 6.49° TCH 55 MAFMU | | | |
| ← 3.5 NM → 2.5 NM → 5 NM → 1.5 NM | | | |
| CATEGORY | A | B | C |
| CIRCLING | 10200-1 ³ / ₄ | 2363 (2400-1 ³ / ₄) | 10220-3 2383 (2400-3) |



SW-1, 31 DEC 2020 to 28 JAN 2021

SW-1, 31 DEC 2020 to 28 JAN 2021