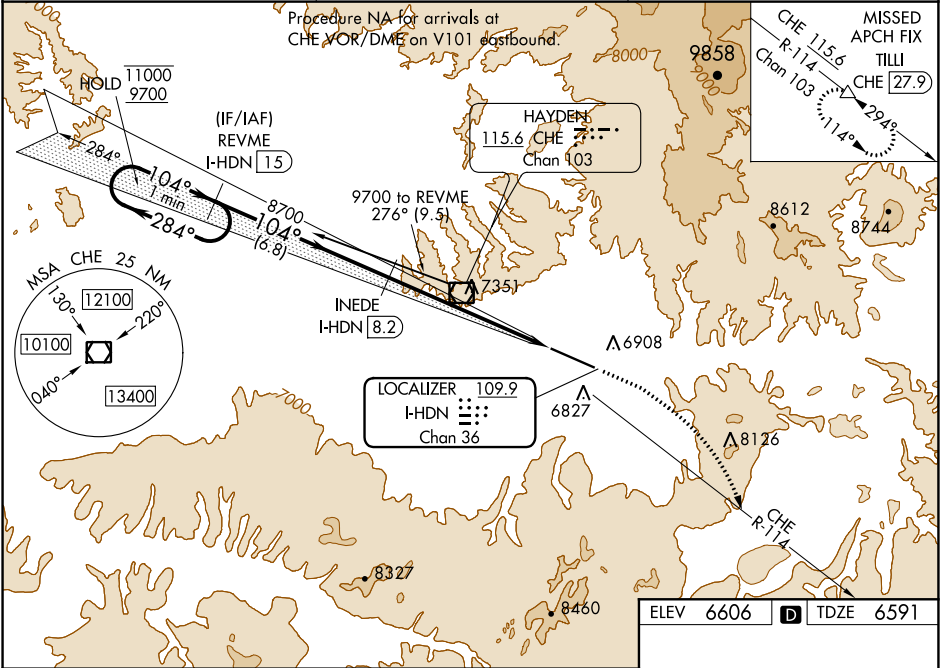


LOC/DME I-HDN 109.9 Chan 36	APP CRS 104°	Rwy Idg TDZE Apt Elev 9490 6591 6606
---	------------------------	--

ILS or LOC RWY 10
YAMPA VALLEY (HDN)

DME required	MALSF	MISSED APPROACH: Climb to 8000 then climbing right turn to 13300 on heading 130° and on CHE VOR/DME R-114 to TILLI/CHE 27.9 DME and hold, continue climb-in-hold to 13300.
Inoperative table does not apply to # S-ILS 10 all Cats. # Missed approach requires a minimum climb of 307 feet per NM to 8700.		

AWOS-3PT 119.275	DENVER CENTER 120.475 235.975	UNICOM 123.0 (CTAF) 0
----------------------------	---	---------------------------------



REVME I-HDN 15	INEDE I-HDN 8.2	8000	13300	CHE R-114	TILLI
One Minute Holding Pattern					
11000 ← 284°	104° →	8700	*I-HDN 5.2	*LOC only	
9700	8700				
GS 3.00°					
TCH 55					
	6.8 NM	3 NM	3.5 NM		
CATEGORY	A	B	C	D	
# S-ILS 10		6791-3/4	200 (200-3/4)		
S-ILS 10		7307-2 1/2	716 (800-2 1/2)		
S-LOC 10	7760-1 1169 (1200-1)	7760-1 1/4 1169 (1200-1 1/4)	7760-3 1169 (1200-3)		
CIRCLING	7760-1 1/4 1154 (1200-1 1/4)	7760-1 1/2 1154 (1200-1 1/2)	7760-3 1154 (1200-3)	8180-3 1574 (1600-3)	

