

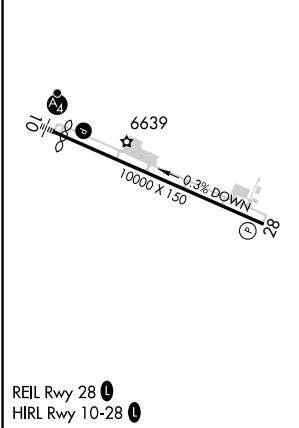
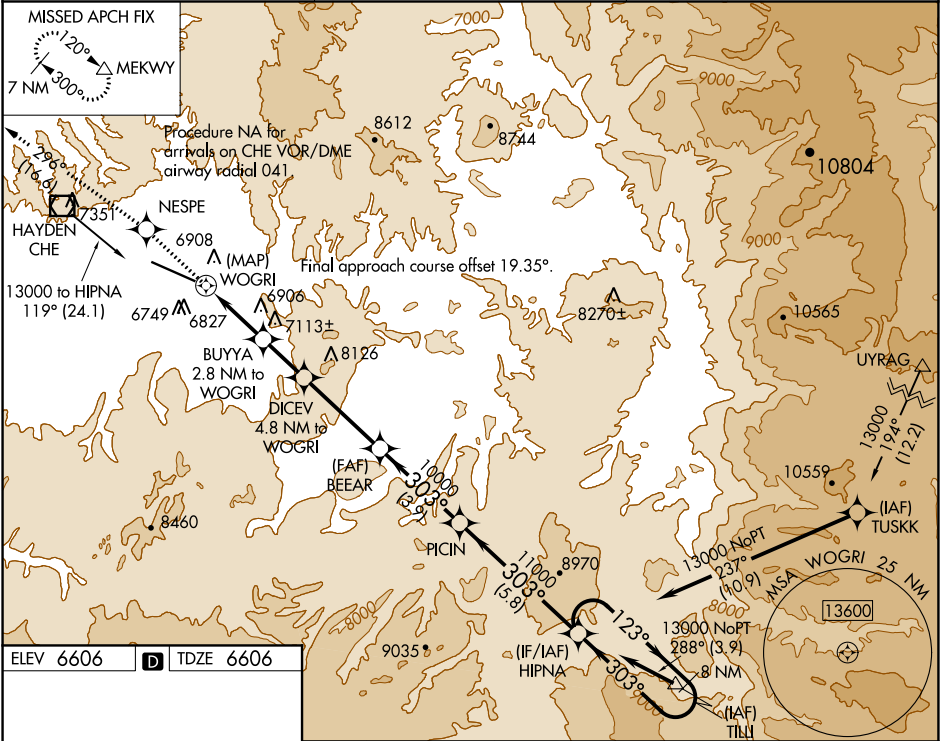
WAAS CH 48825 W28A	APP CRS 303°	Rwy Idg TDZE Apt Elev	10000 6606 6606
--------------------------	-----------------	-----------------------------	-----------------------

RNAV (GPS) RWY 28

YAMPA VALLEY (HDN)

RNP APCH.	When local altimeter not received use Craig-Moffat altimeter setting and increase all MDA 100 feet, increase LP and LNAV Cat C/D visibility ¼ mile. -30°C Rwy 28 helicopter visibility reduction below ¾ SM NA.	MISSED APPROACH: Climb to 10000 direct NESPE and on track 296° to MEKWY and hold.
-----------	--	---

AWOS-3PT 119.275	DENVER CENTER 120.475 235.975	UNICOM 123.0 (CTAF) 1
---------------------	----------------------------------	--------------------------



10000	NESPE	MEKWY	HIPNA	8 NM Holding Pattern
↑	tr 296°	△		
	DICEV 4.8 NM to WOGRI	BEEAR	PICIN	123° → 13000
	BUYA 2.8 NM to WOGRI			← 303°
	WOGRI			
	7820	8600	10000	11000
	0.5	2.8 NM	2 NM	3.7 NM
			3.9 NM	5.8 NM
CATEGORY	A	B	C	D
LP MDA	7000-1	394 (400-1)	7000-1½	394 (400-1½)
LNAV MDA	7080-1	474 (500-1)	7080-1½	474 (500-1½)
CIRCLING	7220-1	614 (700-1)	7660-3 1054 (1100-3)	8180-3 1574 (1600-3)

SW-1, 31 DEC 2020 to 28 JAN 2021

SW-1, 31 DEC 2020 to 28 JAN 2021