

APP CRS	Rwy Idg	9490
104°	TDZE	6591
	Apt Elev	6606

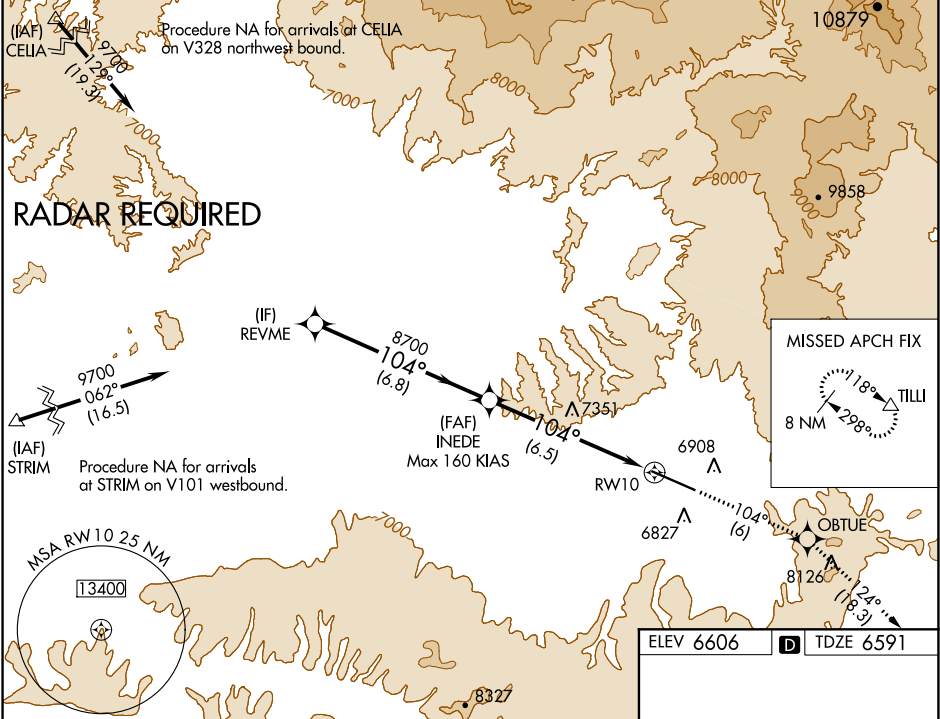
RNAV (RNP) Z RWY 10  
YAMPA VALLEY (HDN)

**GPS required.** Inop table does not apply to RNP 0.30. For uncompensated Baro-VNAV systems, procedure NA below -28°C (-18°F) or above 44°C (112°F). For inop MALSF, increase \*RNP 0.20 Cat D visibility to 1<sup>3</sup>/<sub>8</sub> mile and RNP 0.20 all Cats to 3 miles.  
\*Missed approach requires a minimum climb of 286 feet per NM to 8900.

MALSF

MISSED APPROACH: Climb to 13800 on track 104° to OBTUE and on track 124° to TILLI and hold, continue climb-in-hold to 13800.

AWOS-3PT 119.275	DENVER CENTER 120.475 235.975	UNICOM 123.0 (CTAF)
---------------------	----------------------------------	------------------------



	REVME	INDE		
	9700	8700		RWY 10
	104°			
	8700			
	6.8 NM		6.5 NM	
GP 3.00° TCH 55				
CATEGORY	A	B	C	D
RNP 0.20 DA*		7016-1 <sup>1</sup> / <sub>8</sub>	425 (500-1 <sup>1</sup> / <sub>8</sub> )	
RNP 0.20 DA		7344-2 <sup>1</sup> / <sub>2</sub>	753 (800-2 <sup>1</sup> / <sub>2</sub> )	
RNP 0.30 DA		7921-5	1330 (1400-5)	
AUTHORIZATION REQUIRED				

