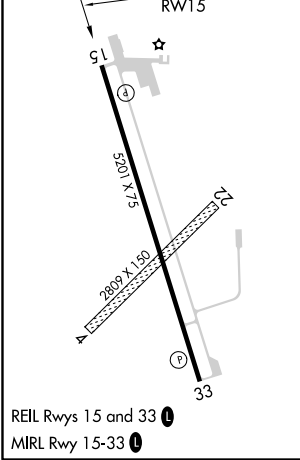
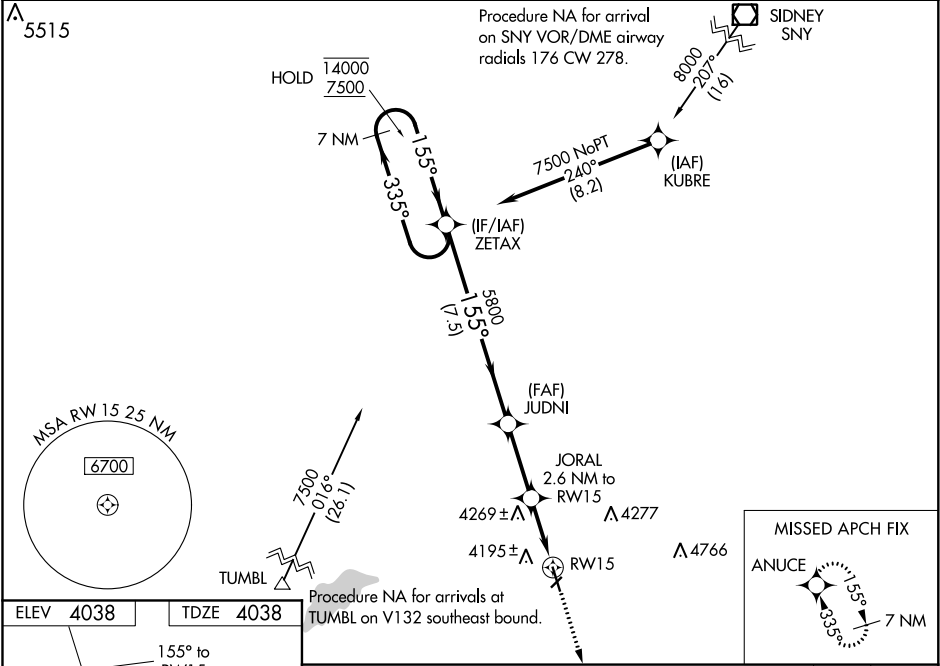


WAAS CH 56330 W15A	APP CRS 155°	Rwy Idg TDZE Apt Elev	5201 4038 4038
--	------------------------	-----------------------------	---

RNAV (GPS) RWY 15
STERLING MUNI (STK)

RNP APCH. ⚠ Circling NA to Rwy 4 and 22. Rwy 15 helicopter visibility reduction below ¾ SM NA. For uncompensated Baro-VNAV systems, LNAV/VNAV NA below -22°C or above 54°C.	MISSED APPROACH: Climb to 6400 direct ANUCE and hold.
--	--

AWOS-3 118.525	DENVER CENTER 118.475 225.4	UNICOM 122.8 (CTAF) 0
--------------------------	---------------------------------------	---------------------------------



7 NM Holding Pattern		ZETAX		JUDNI		JORAL 2.6 NM to RW15		<div><div>6400 ↑</div><div>ANUCE ✦</div></div>	
14000 ← 335° 7500 → 155°		155°		155°		*1.3 NM to RW15		*INAV only.	
GP 3.00° TCH 44		5800		*4900		RW15			
		7.5 NM		2.8 NM		1.3		1.3	
CATEGORY	A		B		C		D		
LPV DA	4288-1 250 (300-1)								
LNAV/ VNAV DA	4288-1 250 (300-1)								
LNAV MDA	4480-1 442 (500-1)				4480-1 3/8 442 (500-1 3/8)				
CIRCLING	4520-1 482 (500-1)		4580-1 542 (600-1)		4620-1 1/2 582 (600-1 1/2)			4720-2 1/4 682 (700-2 1/4)	

SW-1, 31 DEC 2020 to 28 JAN 2021

SW-1, 31 DEC 2020 to 28 JAN 2021