




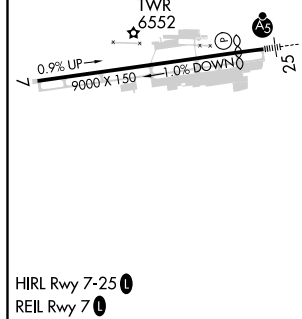
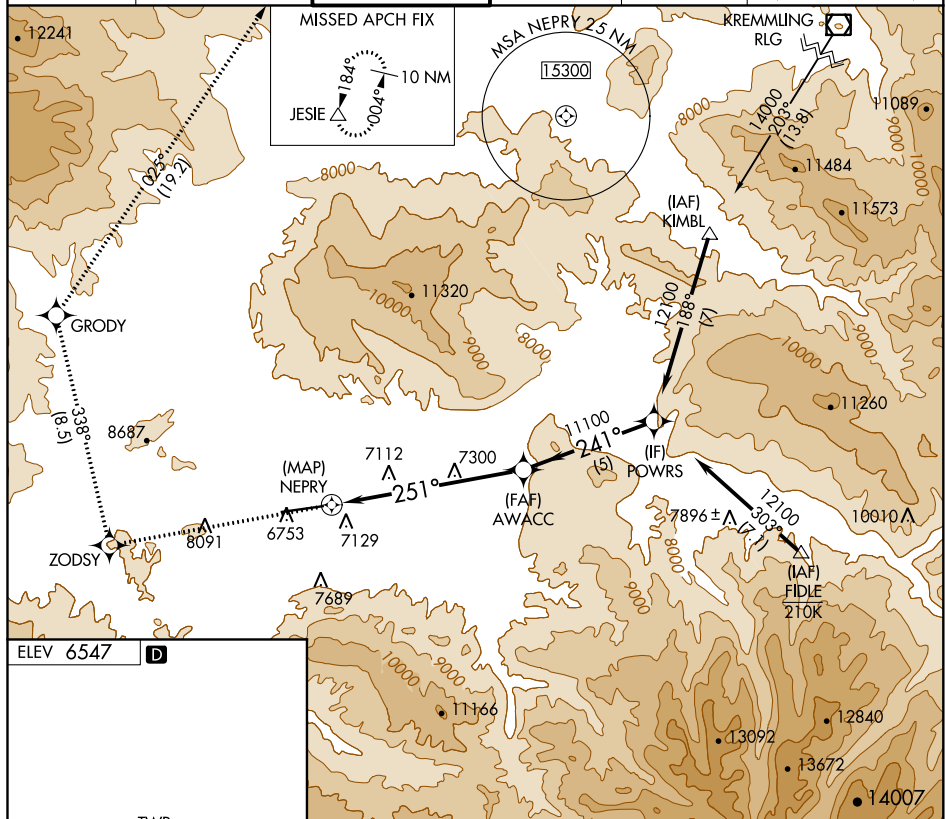
RNAV (GPS)-D

EAGLE COUNTY RGNL (EGE)

   -21°C	Circling to Rwy 7 NA at night. Circling NA for Cats C and D south of Rwy 7-25. Rwy 7 helicopter visibility reduction below 1 SM NA. Rwy 25 helicopter visibility reduction below ¾ SM NA. Inoperative table does not apply.
---	---

MISSED APPROACH: (Do not exceed 185K until GRODY) Climb to 14600 direct ZODSY then on track 338° to GRODY and on track 025° to JESIE and hold, continue climb in-hold to 14600.

ATIS 135.575	DENVER CENTER 128.65 282.2	EAGLE TOWER ★ 119.8 (CTAF) 0	GND CON 121.8	CLNC DEL 124.75	DENVER CLNC DEL 124.75 (When tower closed)
------------------------	--------------------------------------	--	-------------------------	---------------------------	---



14600 ↑	ZODSY ✱	tr 338°	GRODY ✱	tr 025°	JESIE △				
CATEGORY		A		B		C		D	
C CIRCLING		9220-1¼ 2673 (2700-1¼)		9220-1½ 2673 (2700-1½)		9220-3		2673 (2700-3)	

SW-1, 31 DEC 2020 to 28 JAN 2021