

APP CRS  
**323°**

Rwy Idg	N/A
TDZE	N/A
Apt Elev	6882

RNAV (GPS)-E

STEAMBOAT SPRINGS/BOB ADAMS FIELD (SBS)

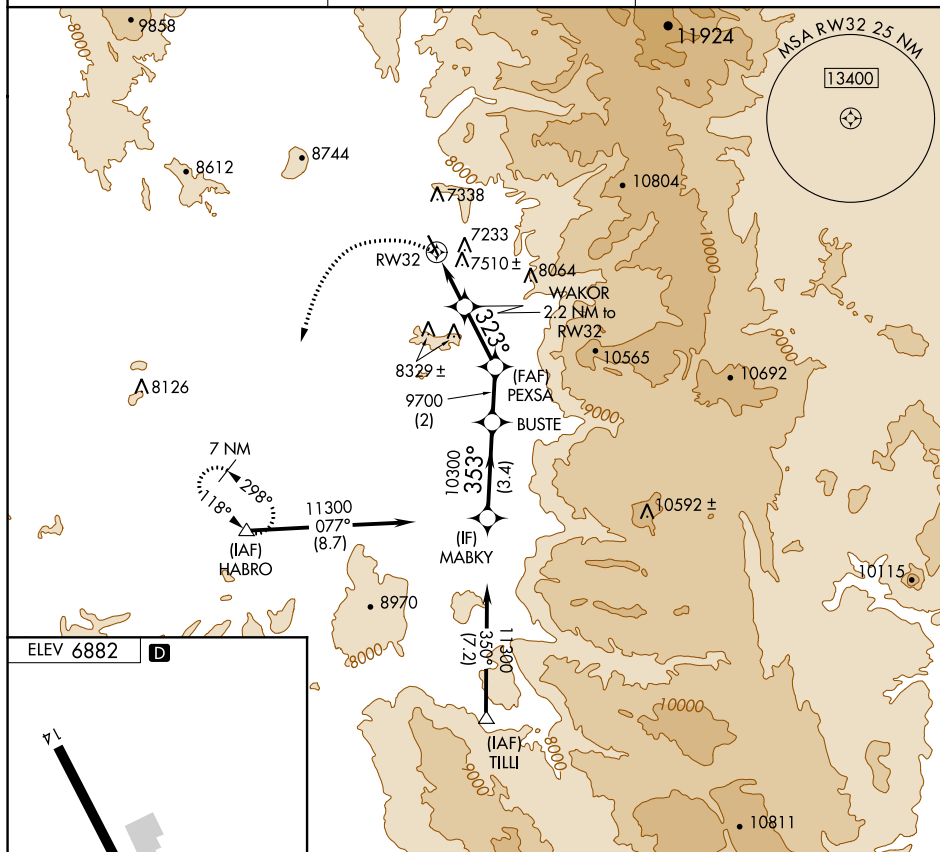


 NA
  -26°C

Circling NA northeast of Rwy 14-32.  
DME/DME RNP- 0.3 NA.  
When local altimeter setting not received, use Yampa Valley altimeter setting and increase all MDA 80 feet.

**MISSED APPROACH:** Climbing left turn to 11300 direct HABRO and hold, continue climb-in-hold to 11300.

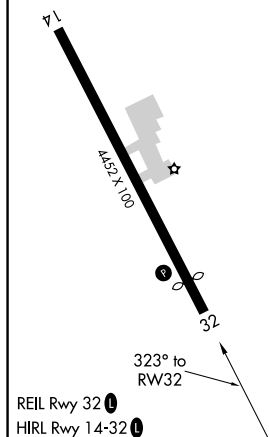
AWOS-3  
118.325

DENVER CENTER  
120,475 235,975

UNICOM ★  
122.8 (CTAF) 

ELEV 6882

D



11300	HABRO △	VGS1 and descent angles not coincident.		MABKY	
11300		WAKOR 2.2 NM to RW32	PEXSA	BUSTE	11300
			323°	353°	
RW32	∠7.75° TCH 40	8740	9700	10300	Procedure Turn NA
	2.2 NM	2.4 NM	2 NM	3.4 NM	
CATEGORY	A	B	C	D	
Ⓢ CIRCLING	8140-1¼ 1258 (1300-1¼)	8140-1½ 1258 (1300-1½)	NA		

STEAMBOAT SPRINGS, COLORADO

Orig-B 23APR20

STEAMBOAT SPRINGS/BOB ADAMS FIELD (SBS)

40°31'N-106°52'W

RNAV (GPS)-E