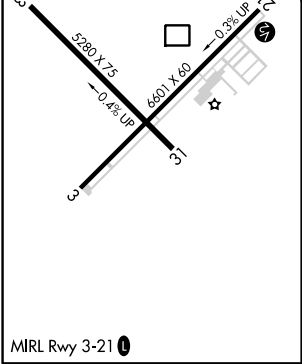
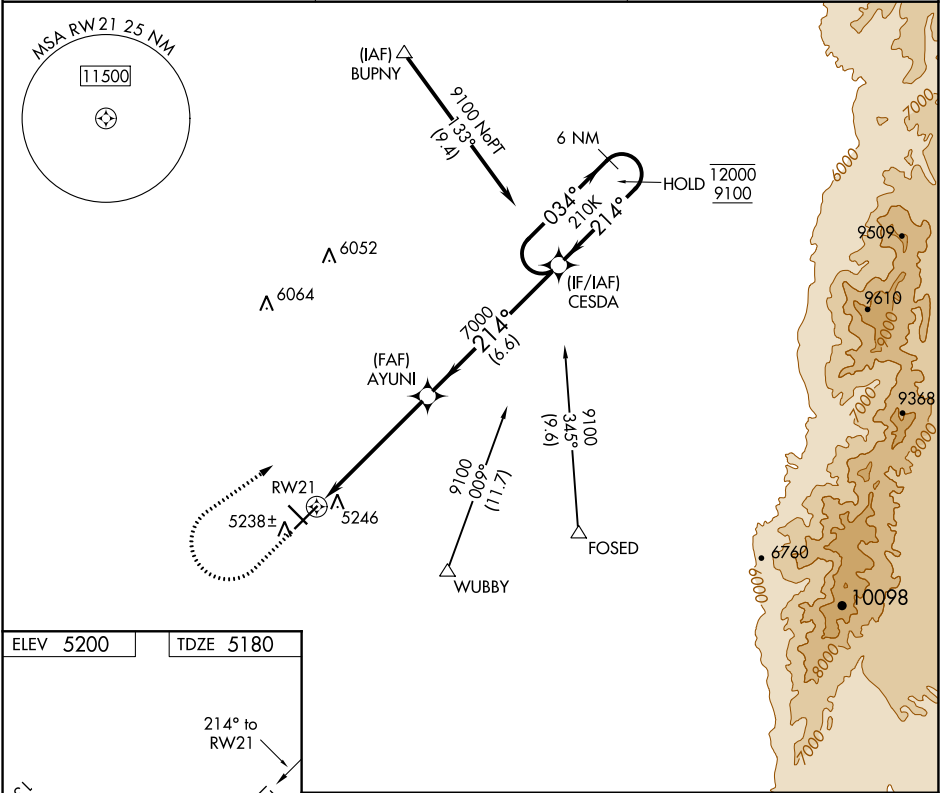



APP CRS	Rwy Idg	6601
214°	TDZE	5180
	Apt Elev	5200

RNAV (GPS) RWY 21

BELEN RGNL (BRG)

RNP APCH		MISSED APPROACH: Climb to 6800 then climbing right turn to 9100 direct CESDA and hold.
T	Procedure NA at night. Rwy 21 helicopter visibility reduction below 1 SM NA.	
AWOS-3PT 118.55	ALBUQUERQUE APP CON 123.9 354.1	UNICOM 122.8 (CTAF) 0



<div><div><div>6800</div><div>↑</div></div><div><div>9100</div><div>↷</div></div><div><div>CESDA</div><div>✦</div></div></div> <div><div>AYUNI</div><div>✕</div><div>7000</div><div>≤3.00°</div><div>TCH 40</div><div>5.6 NM</div><div>6.6 NM</div><div>CESDA</div><div>6 NM Holding Pattern</div><div>034° →</div><div>← 214°</div><div>12000</div><div>9100</div></div>				
CATEGORY	A	B	C	D
LNAV MDA	5560-1 380 (400-1)			NA
 CIRCLING	5600-1 400 (400-1)	5660-1 460 (500-1)	5660-1½ 460 (500-1½)	NA

SW-1, 31 DEC 2020 to 28 JAN 2021

SW-1, 31 DEC 2020 to 28 JAN 2021