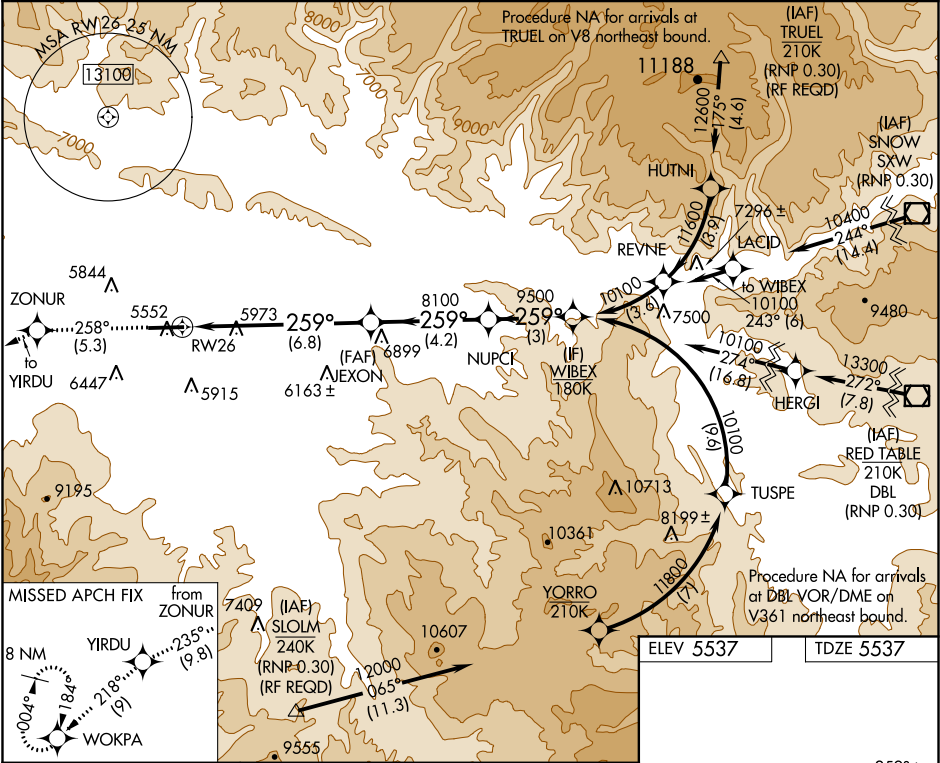


APP CRS	Rwy Idg	7000
259°	TDZE	5537
	Apt Elev	5537

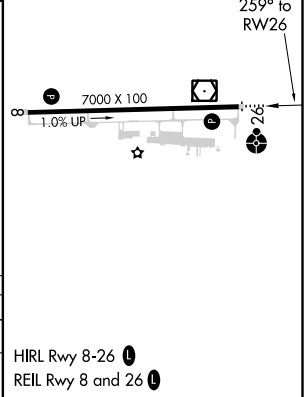
RNAV (RNP) Y RWY 26
RIFLE GARFIELD COUNTY (RIL)

 -14°C	When VGS I inoperative, procedure NA at night. For uncompensated Baro-VNAV systems, procedure NA below -24°C (-11°F) or above 38°C (100°F). GPS required.	ODALS 	MISSED APPROACH: Climb to 13000 on track 258° to ZONUR and track 235° to YIRDU and track 218° to WOKPA and hold, continue climb-in-hold to 13000.
-------------------	---	-----------	---

ASOS 135.275	DENVER CENTER 134.95 327.075	UNICOM 122.8 (CTAF) 0
------------------------	--	---------------------------------



13000	ZONUR	tr 258°	tr 235°	YIRDU	tr 218°	WOKPA
CATEGORY A B C D						
RNP 0.30 DA 6387-2½ 850 (900-2½) NA						
AUTHORIZATION REQUIRED						



SW-1, 31 DEC 2020 to 28 JAN 2021

SW-1, 31 DEC 2020 to 28 JAN 2021