




APP CRS 259°	Rwy Idg TDZE Apt Elev	7000 5537 5537
------------------------	-----------------------------	---

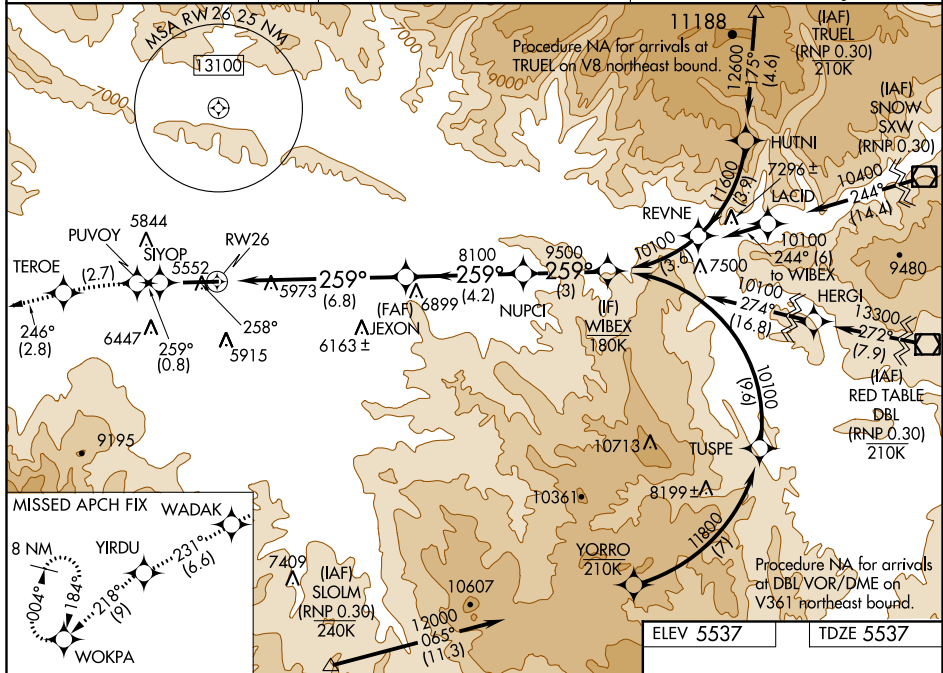
RNAV (RNP) Z RWY 26
RIFLE GARFIELD COUNTY (RIL)





	When VGSI inoperative, procedure NA at night. RF required.
	GPS required. Missed approach requires RNP less than 1.0.
	For uncompensated Baro-VNAV systems, procedure NA below -24°C (-11°F) or above 38°C (100°F).
	* Missed approach requires minimum climb of 398 feet per NM to 9100.

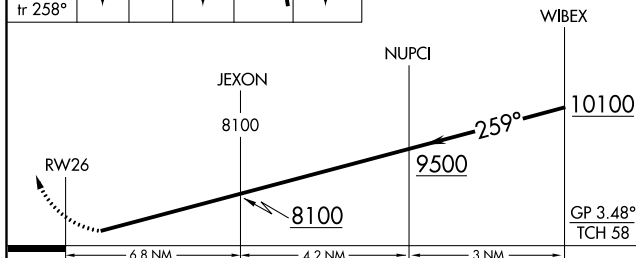
ODALS

MISSED APPROACH: Climb to 13000 on track 258° to SIYOP and track 259° to PUYOY left turn to TEROE and track 246° to WADAK and track 231° to YIRDU and track 218° to WOKPA and hold, continue climb-in-hold to 13000

ASOS 135.275	DENVER CENTER 134.95 327.075	UNICOM 122.8 (CTAF) ①
-----------------	---------------------------------	--------------------------

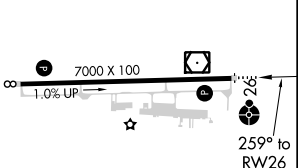


13000 ↑ tr 258°	SIYOP 	tr 259°	PUVOY 		TEROE 
-----------------------	--	------------	--	---	--



CATEGORY	A	B	C	D
RNP 0.10 DA*	5955-1	418 (500-1)		NA
RNP 0.30 DA	6387-2½	850 (900-2½)		NA

AUTHORIZATION REQUIRED



HIRL Rwy 8-26 **L**
REIL Rwy 8 and 26 **L**