

| | | |
|---------|----------|------|
| APP CRS | Rwy Idg | 7000 |
| 078° | TDZE | 5498 |
| | Apt Elev | 5537 |

RNAV (RNP) Z RWY 8
RIFLE GARFIELD COUNTY (RIL)

RF and GPS required. Procedure NA for wingspans greater than 136 feet.

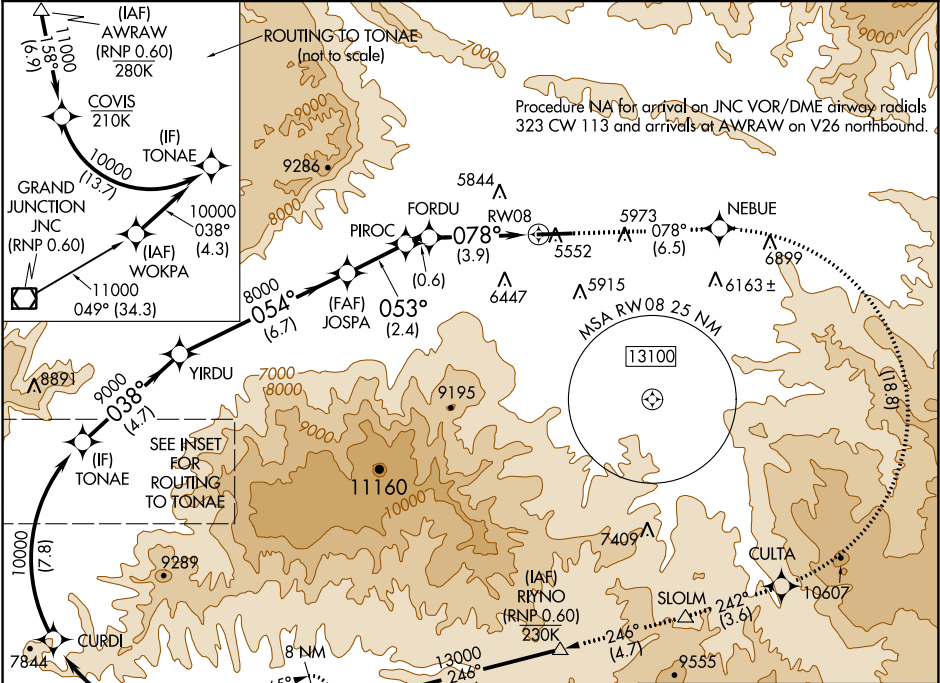
For uncompensated Baro-VNAV systems, procedure NA below -24°C (-11°F) or above 54°C (130°F).

*Missed approach requires minimum climb of 425 feet per NM to 11300.

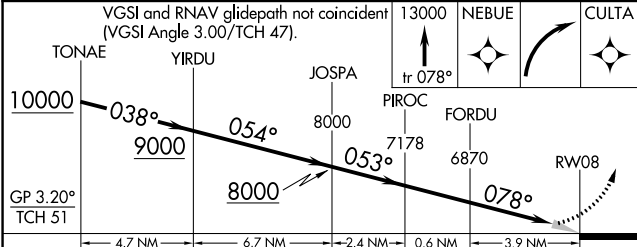
**Missed approach requires minimum climb of 425 feet per NM to 10000; if unable, see RNAV (GPS) Y RWY 8.

MISSED APPROACH: Climb to 13000 on track 078° to NEBUE, right turn to CULTA, and track 242° to SLOLM and track 246° to RYNO and track 246° to HUGSI and hold.

| | | |
|-----------------|---------------------------------|--------------------------|
| ASOS 135.275 | DENVER CENTER 134.95 327.075 | UNICOM 122.8 (CTAF) 0 |
|-----------------|---------------------------------|--------------------------|



| | |
|-----------|-----------|
| ELEV 5537 | TDZE 5498 |
|-----------|-----------|



| | | | | |
|---------------|--------|-------------|---|----|
| CATEGORY | A | B | C | D |
| RNP 0.10 DA* | 5748-1 | 250 (300-1) | | NA |
| RNP 0.30 DA** | 6391-3 | 893 (900-3) | | NA |

AUTHORIZATION REQUIRED

HIRL Rwy 8-26 0

REIL Rwy 8 and 26 0

Diagram showing the 078° to RWY 8 approach with a 1.0% climb to 7000 ft. The diagram includes a 7000 X 100 scale bar and a 1.0% UP label. The diagram also shows the 078° to RWY 8 approach with a 1.0% climb to 7000 ft. The diagram includes a 7000 X 100 scale bar and a 1.0% UP label.

SW-1, 31 DEC 2020 to 28 JAN 2021

SW-1, 31 DEC 2020 to 28 JAN 2021