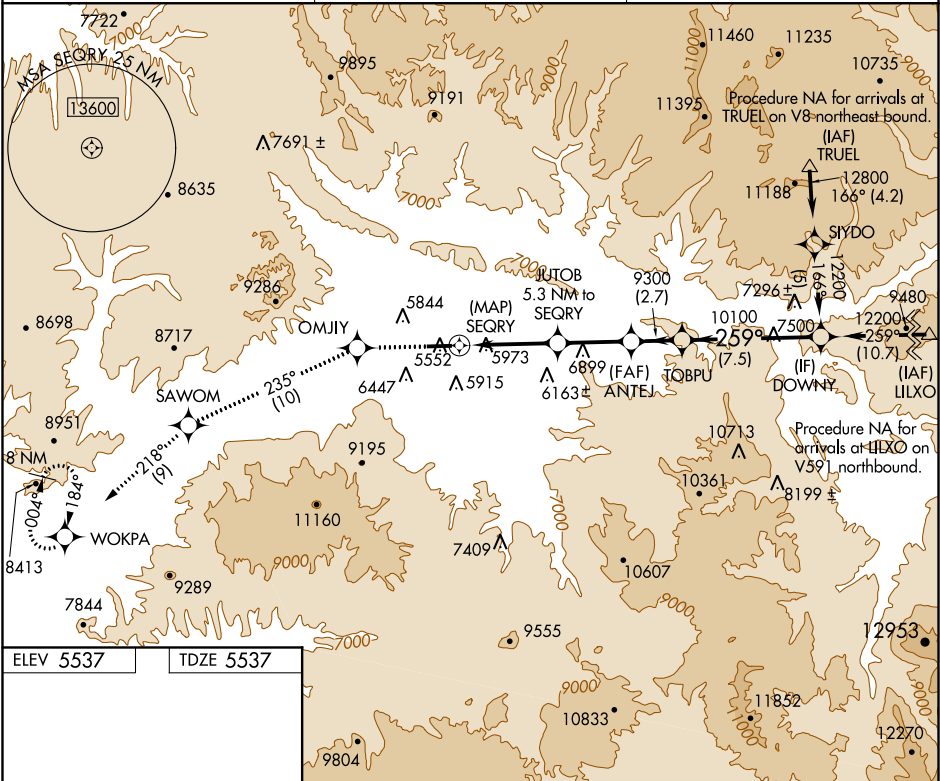


APP CRS	Rwy Idg	7000
259°	TDZE	5537
	Apt Elev	5537

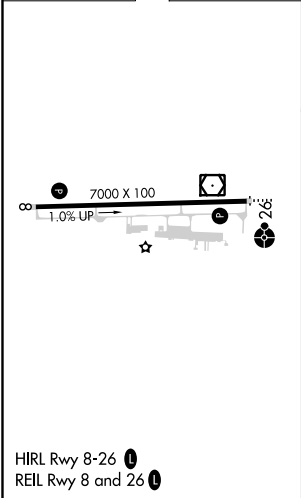
RNAV (GPS) W RWY 26
RIFLE GARFIELD COUNTY(RIL)





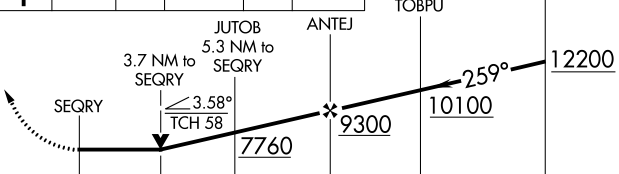


 DME/DME RNP-0.3 NA. Visibility reduction by helicopters NA. Circling NA south of Rwy 8-26 at night. -14°C Inoperative table does not apply.	 ODALS	MISSED APPROACH: Climb to 13000 direct OMJIY and on track 235° to SAWOM and on track 218° to WOKPA and hold, continue climb-in-hold to 13000.
--	-----------	---

ASOS 135.275	DENVER CENTER 134.95 327.075	UNICOM 122.8 (CTAF)
------------------------	--	-------------------------------



ELEV 5537	TDZE 5537
-----------	-----------



13000	OMJIY	tr 235°	SAWOM	tr 218°	WOKPA						
											
											
											
CATEGORY	A		B		C		D				
LNAV MDA	7180-1¼ 1643 (1700-1¼)		7180-1½ 1643 (1700-1½)		7180-3 1643 (1700-3)		NA				
 CIRCLING	7180-1¼ 1643 (1700-1¼)		7180-1½ 1643 (1700-1½)		7180-3 1643 (1700-3)		NA				

SW-1, 31 DEC 2020 to 28 JAN 2021

SW-1, 31 DEC 2020 to 28 JAN 2021