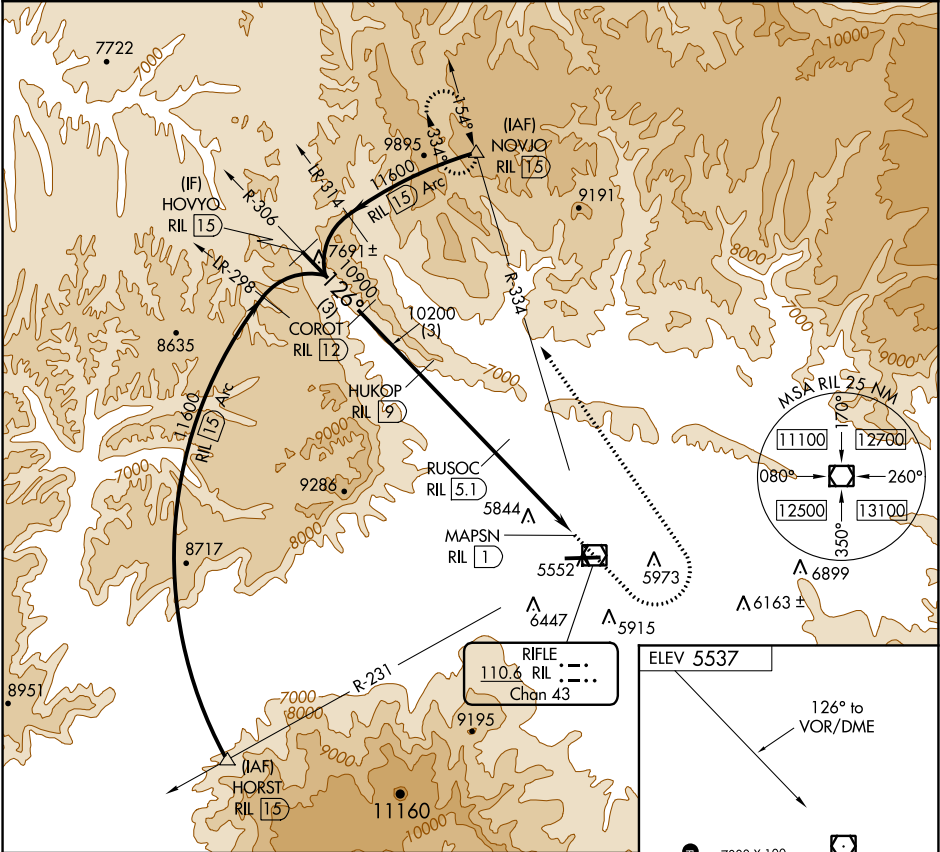


VOR/DME RIL 110.6 Chan 43	APP CRS 126°	Rwy Idg TDZE Apt Elev N/A N/A 5537
---	------------------------	--

VOR/DME-C
RIFLE GARFIELD COUNTY (RIL)

<p>⚠ Circling NA south of Rwy 8-26 at night.</p> <p>❄ -14°C</p>	<p>MISSED APPROACH: Climb to 8500 then climbing left turn 12000 on heading 305° and RIL VOR/DME R-334 to NOVJO/15 DME and hold, continue climb-in-hold to 12400.</p>
---	--

ASOS 135.275	DENVER CENTER 134.95 327.075	UNICOM 122.8 (CTAF) 0
------------------------	--	---------------------------------



HOVYO RIL 15	COROT RIL 12	HUKOP RIL 9	8500	12000	RIL R-334	NOVJO
11600	10900	10200	8800	RUSOC RIL 5.1	RIL VOR/DME	
3 NM	3 NM	3.9 NM	4.1 NM			
CATEGORY	A	B	C	D		
CIRCLING	7360-1¼ 1823 (1900-1¼)	7360-1½ 1823 (1900-1½)	7360-3 1823 (1900-3)	NA		

HIRL Rwy 8-26 0
REIL Rwy 8 and 26 0