

LOC/DME I-FTG

109.3

Chan **30**

APP CRS

263°

Rwy Idg
TDZE
Apt Elev

8002
5489
5515

ILS or LOC RWY 26

COLORADO AIR AND SPACE PORT (CFO)

DME required.

▼

For inop ALS, increase S-LOC 26 Cat C/D visibility to 1 1/8 SM. Autopilot coupled approach NA below 6250 MSL.

MALSR

MISSED APPROACH: Climb to 6100 then climbing left turn to 7200 on heading 080° and on FQF VORTAC R-045 to SKIPI/I-FTG 7 DME and hold.

ATIS

119.025

DENVER APP CON

128.25 371.95

SPACE PORT TOWER ★

120.2 (CTAF)

GND CON

124.7

CLNC DEL

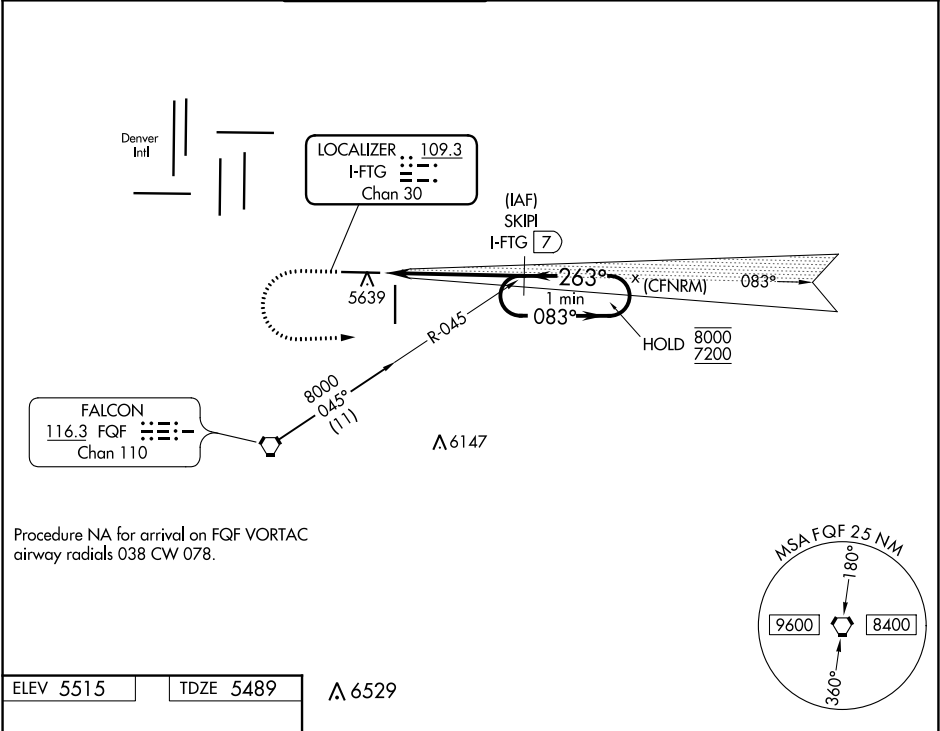
124.7

CLNC DEL

121.75
(When twr closed)

UNICOM

122.95



ELEV 5515

TDZE 5489

△ 6529

263° 5.2 NM from FAF

△ 5559±

0.5% UP → DOWN

0.4% → DOWN

8002 X 100

5538

TWR 5687

0.5% UP → DOWN

8000 X 100

35

6100

7200

hdg 080°

FQF R-045

SKIPI I-FTG 7

One Minute Holding Pattern

083°

8000

7200

263°

7200

GS 3.00°

TCH 50

*LOC only

I-FTG 1.7

*I-FTG 2.9

1.1 NM

4.1 NM

CATEGORY	A	B	C	D
S-ILS 26	5689-1/2 200 (200-1/2)			
S-LOC 26	5900-1/2 411 (400-1/2)		5900-3/4 411 (400-3/4)	
CIRCLING	6000-1 485 (500-1)		6100-1 1/2 585 (600-1 1/2)	6300-2 1/2 785 (800-2 1/2)