

WAAS CH 93909 W26A	APP CRS 263°	Rwy Idg TDZE Apt Elev	8002 5489 5515
--	------------------------	-----------------------------	---

RNAV (GPS) RWY 26

COLORADO AIR AND SPACE PORT (CFO)

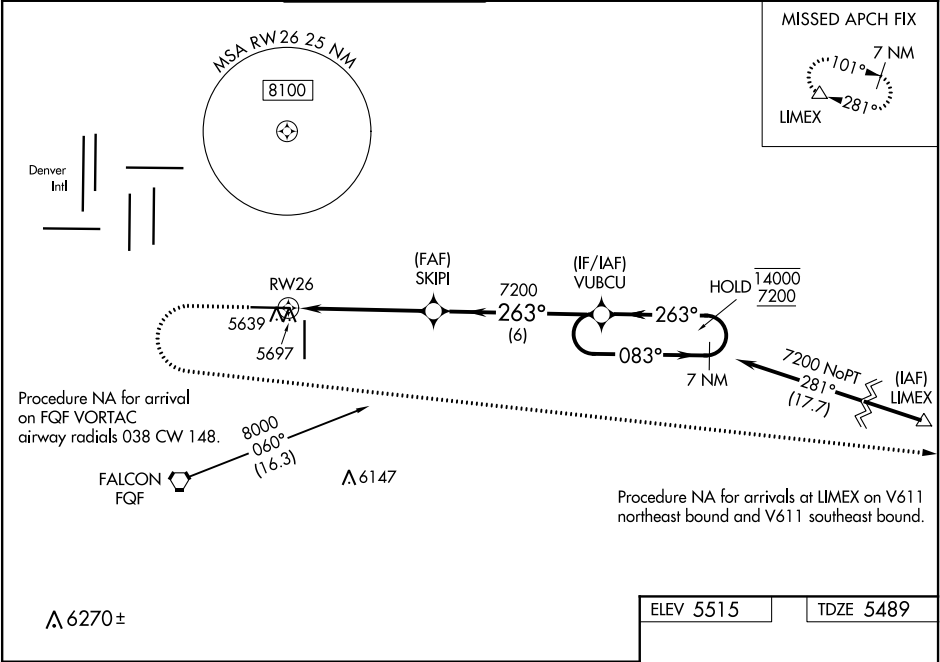
RNP APCH.

For uncompensated Baro-VNAV systems, LNAV/VNAV NA below -25°C or above 48°C. For inop ALS, increase LNAV/VNAV all Cats visibility to 1½ SM, and increase LNAV Cat C/D visibility to 1½ SM.

MALSRL

MISSED APPROACH: (Do not exceed 200K until LIMEX) Climb to 6100 then climbing left turn to 7600 direct LIMEX and hold.

ATIS 119.025	DENVER APP CON 128.25 371.95	SPACE PORT TOWER ★ 120.2 (CTAF) 0	GND CON 124.7	CLNC DEL 124.7	CLNC DEL 121.75 (When twr closed)	UNICOM 122.95
------------------------	--	---	-------------------------	--------------------------	--	-------------------------



6100

↑

7600

↶

LIMEX

△

*LNAV only

*1.4 NM to RW26

RW26

1.4 NM

3.8 NM

6 NM

SKIPI

7200

263°

7200

VUBCU

7 NM Holding Pattern

083°

14000

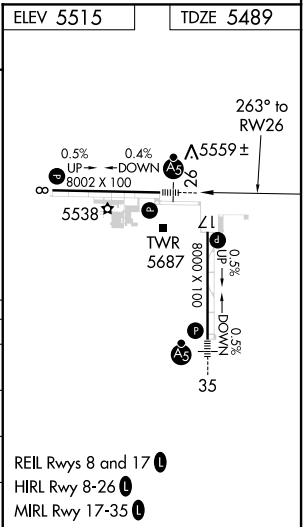
263°

7200

GP 3.00°

TCH 50

CATEGORY	A	B	C	D
LPV DA	5689-½ 200 (200-½)			
LNAV/VNAV DA	5858-¾ 369 (400-¾)			
LNAV MDA	5960-½ 471 (500-½)	5960-1 471 (500-1)		
CIRCLING	6000-1 485 (500-1)	6100-1½ 585 (600-1½)	6300-2½ 785 (800-2½)	



SW-1, 31 DEC 2020 to 28 JAN 2021

SW-1, 31 DEC 2020 to 28 JAN 2021