

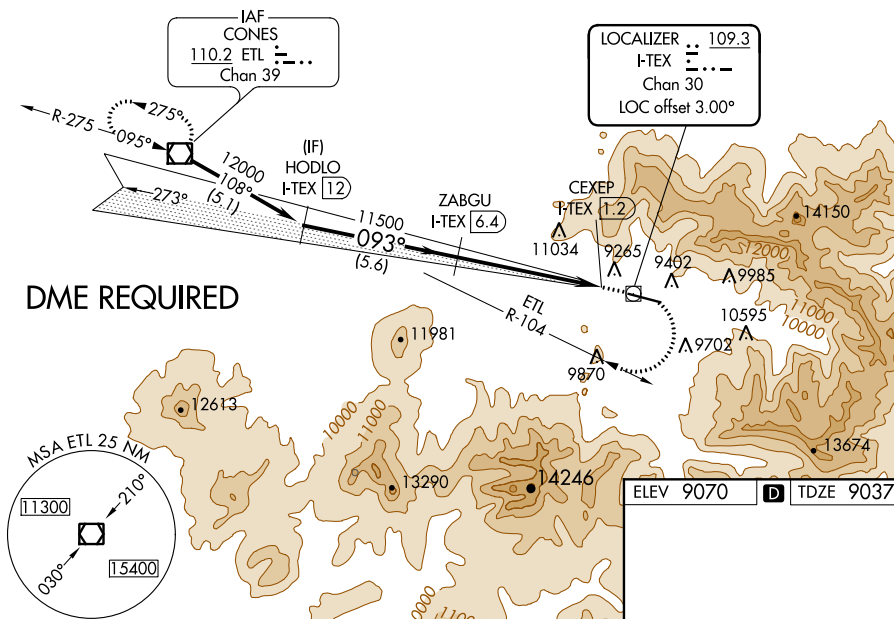
LOC RWY 9
TELLURIDE RGNL (TEX)

Circling NA north of Rwy 9-27.
Circling NA at night.
DME required.

MISSED APPROACH: Climb to 11800 then climbing right turn to 13500 on ETL R-104 to ETL VOR/DME and hold.

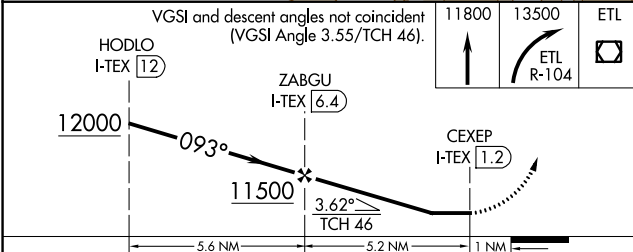
UNICOM
123.0 (CTAF)

Procedure NA for arrivals at ETL VOR/DME
on V382 northwest bound.



ELEV 9070	D	TDZE 9037
-----------	----------	-----------

VGSI and descent angles not coincident
(VGSI Angle 3.55/TCH 46).



CATEGORY	A	B	C	D
S-9	11340-1¼ 2303 (2300-1¼)	11340-1½ 2303 (2300-1½)	NA	
C CIRCLING	11340-1¼ 2270 (2300-1¼)	11340-1½ 2270 (2300-1½)	NA	

HIRL Rwy 9-27 **L**
REIL Rwy 9 and 27 **L**