

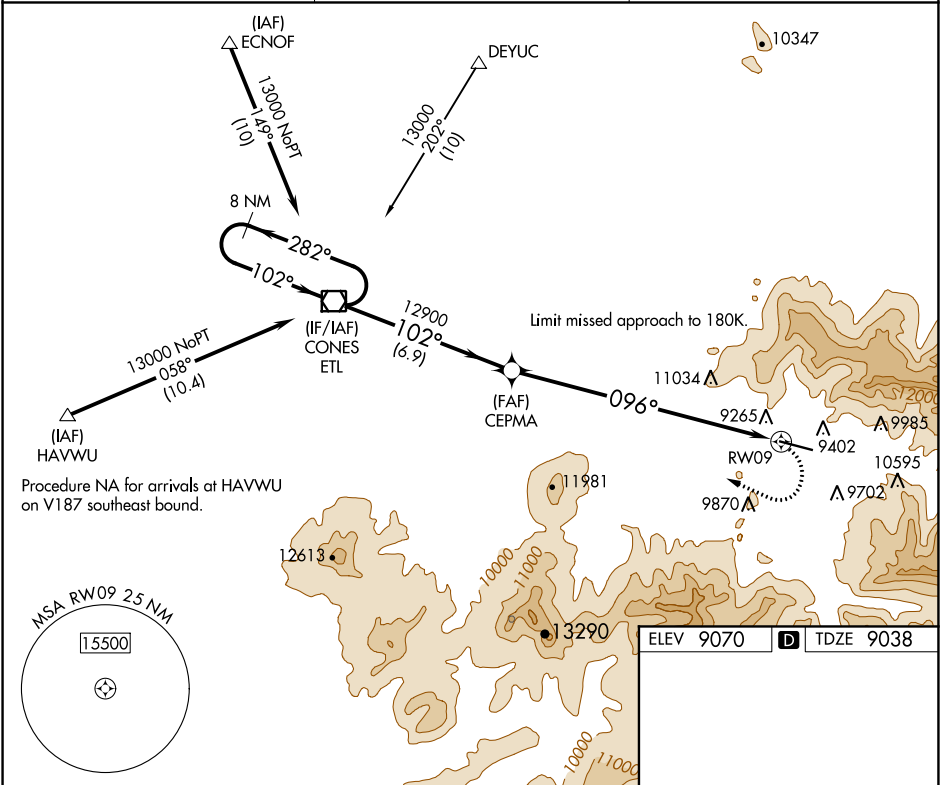
WAAS CH 82637 W09B	APP CRS 096°	Rwy Idg 6911 TDZE 9038 Apt Elev 9070
--	------------------------	---

RNAV (GPS) Z RWY 9

TELLURIDE RGNL (TEX)

<div><div>⚠</div><div>⚠</div><div>⚠</div></div> <div><div>Circling NA at night. When local altimeter setting not received, procedure NA.</div><div>Circling NA north of Rwy 9-27. DME/DME RNP-0.3 NA.</div><div>*Missed approach requires a minimum climb of 380 feet per NM to 12500; if unable to meet climb gradient, see RNAV (GPS) Y RWY 9.</div></div>	<div>MISSED APPROACH: Climbing right turn to 15000 direct ETL VOR/DME and hold, continue climb-in-hold to 15000.</div>
--	--

AWOS-3 118.325	DENVER CENTER 125.35 354.05	UNICOM 123.0 (CTAF) 1
--------------------------	---------------------------------------	---------------------------------



8 NM Holding Pattern		ETL VOR/DME	CEPMA	RWY 9
13000		102°	12900	096°
282°		102°	3.59° TCH 46	096° to RWY 9
102°		102°	10 NM	7111 X 100
6.9 NM		10 NM		0.4% UP
CATEGORY	A	B	C	D
LP MDA*	10640-1¼ 1602 (1600-1¼)	10640-1½ 1602 (1600-1½)	10640-3 1602 (1600-3)	NA
CIRCLING	11640-1¼ 2570 (2600-1¼)	11640-1½ 2570 (2600-1½)	11640-3 2570 (2600-3)	NA