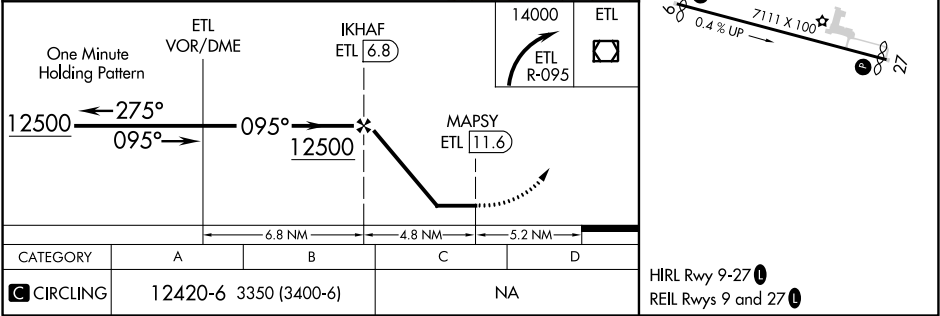
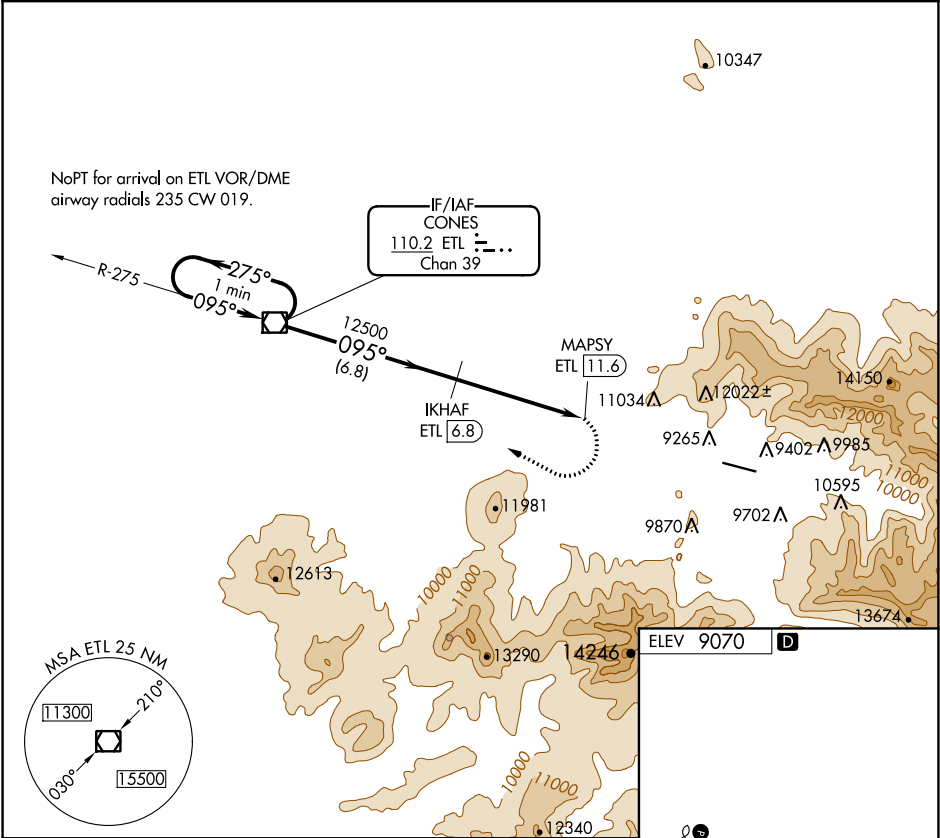


VOR/DME ETL	APP CRS	Rwy Idg TDZE	N/A
110.2	095°	Apt Elev	N/A
Chan 39			9070

VOR/DME-A  
TELLURIDE RGNL (TEX)

<div><div><div></div><div></div><div></div></div><div><div></div><div></div><div></div></div></div> <div><div></div><div></div><div></div></div> <div><div></div><div></div><div></div></div>	<div>Circling NA north of Rwy 9-27. Procedure NA at night.</div>	<div>MISSED APPROACH: Immediate climbing right turn to 14000 via ETL VOR/DME R-095 to ETL VOR/DME and hold.</div>
---	--	---

AWOS-3 118.325	DENVER CENTER 125.35 354.05	UNICOM 123.0 (CTAF) 1
-------------------	--------------------------------	--------------------------



CATEGORY	A	B	C	D
CIRCLING	12420-6 3350 (3400-6)		NA	

TELLURIDE, COLORADO  
Amdt 1A 30JAN20

37°57'N-107°55'W

TELLURIDE RGNL (TEX)  
VOR/DME-A

SW-1, 31 DEC 2020 to 28 JAN 2021

SW-1, 31 DEC 2020 to 28 JAN 2021