

LOC/DME I-SRR	APP CRS	Rwy Idg	8120
110.7	241°	TDZE	6771
Chan 44		Apt Elev	6814

ILS or LOC/DME RWY 24

SIERRA BLANCA RGNL (SRR)

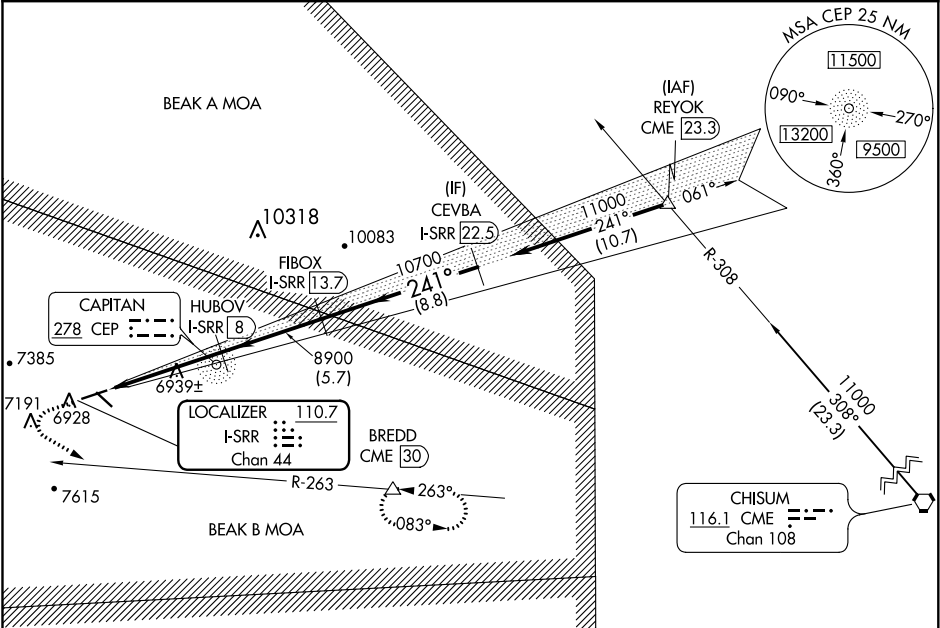
▼

NA

If local altimeter setting not received procedure not authorized.
Use I-SRR DME when on localizer course.
Circling not authorized to Rwy 12/30.

MISSED APPROACH: Climb to 7500 then climbing left turn to 11000 via heading 110° and CME VORTAC R-263 to BREDD/CME 30 DME and hold, continue climb-in-hold to 11000.

AWOS-3 126.475	ALBUQUERQUE CENTER 132.65 257.6	UNICOM 122.8 (CTAF) 0
--------------------------	---	---------------------------------



ELEV 6814	D	TDZE 6771
-----------	---	-----------

241° 6.5 NM from FAF

8120 x 100' 0.7% DOWN 0.8% UP 6309 x 75' 0.8% UP

7500 11000

hdg 110°

BREDD CME R-263

VGSI and ILS glidepath not coincident (VGSI Angle 3.00/TCH 38).

FIBOX I-SRR 13.7 HUBOV I-SRR 8 CEVBA I-SRR 22.5

11000 Procedure Turn NA GS 3.00° TCH 50

1.7 NM 4.8 NM 5.7 NM 8.8 NM

CATEGORY	A	B	C	D
S-ILS 24	6971-¾ 200 (200-¾)			
S-LOC 24	7220-1	449 (500-1)	7220-1¼ 449 (500-1¼)	7220-1½ 449 (500-1½)
CIRCLING	7320-1 506 (600-1)	7360-1 546 (600-1)	7360-1½ 546 (600-1½)	7500-2¼ 686 (700-2¼)

MIRL Rwy 6-24 and 12-30