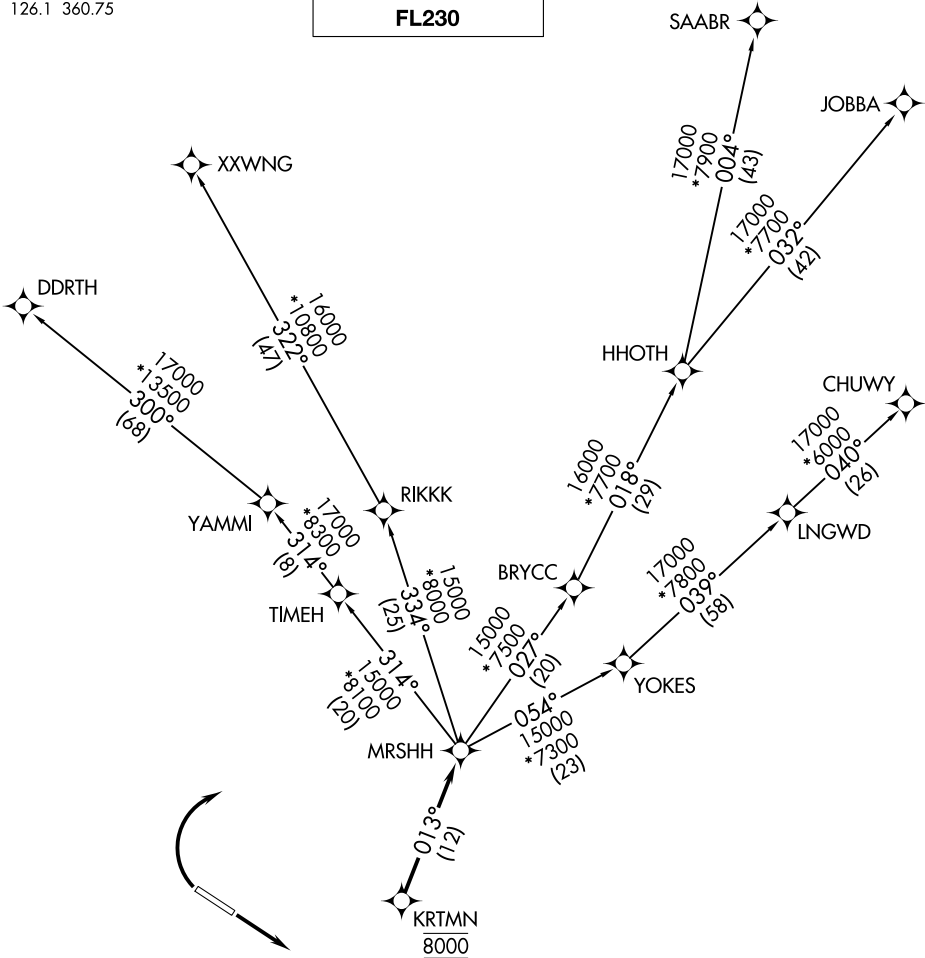


DENVER DEP CON  
126.1 360.75

TOP ALTITUDE:  
FL230



SW-1, 31 DEC 2020 to 28 JAN 2021

SW-1, 31 DEC 2020 to 28 JAN 2021

TAKEOFF MINIMUMS

Rwy 11: Standard.  
Rwy 29: Standard with minimum climb of 370' per NM to 8000.

- NOTE: DME/DME/IRU or GPS required.
- NOTE: RNAV 1.
- NOTE: Turbojets only.
- NOTE: RADAR required.

NOTE: Chart not to scale.

(NARRATIVE ON FOLLOWING PAGE)