

SKYEE ONE DEPARTURE (RNAV)

AL-9041 (FAA)

VANCE BRAND (LMO)
LONGMONT, COLORADO

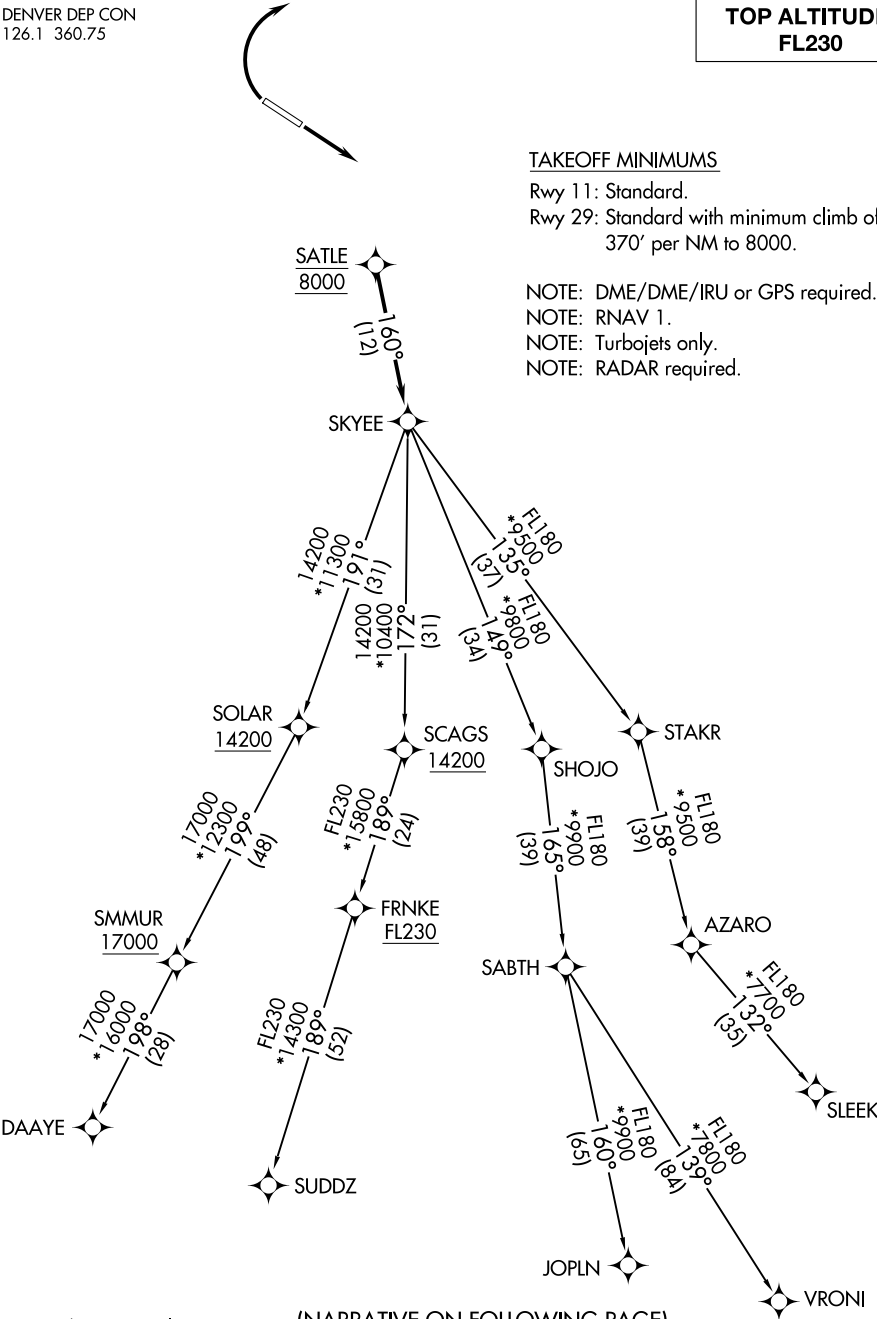
DENVER DEP CON
126.1 360.75

TOP ALTITUDE:
FL230

TAKEOFF MINIMUMS

Rwy 11: Standard.
Rwy 29: Standard with minimum climb of
370' per NM to 8000.

NOTE: DME/DME/IRU or GPS required.
NOTE: RNAV 1.
NOTE: Turbojets only.
NOTE: RADAR required.



NOTE: Chart not to scale.

(NARRATIVE ON FOLLOWING PAGE)

SKYEE ONE DEPARTURE (RNAV)

(SKYEE1.SKYEE) 26MAR20

LONGMONT, COLORADO
VANCE BRAND (LMO)

SW-1, 31 DEC 2020 to 28 JAN 2021

SW-1, 31 DEC 2020 to 28 JAN 2021