

EMMYS SEVEN DEPARTURE (RNAV)

AL-9077 (FAA)

DENVER, COLORADO

NOTE: DME/DME/IRU or GPS required.

NOTE: RNAV 1.

NOTE: Turbojets only.

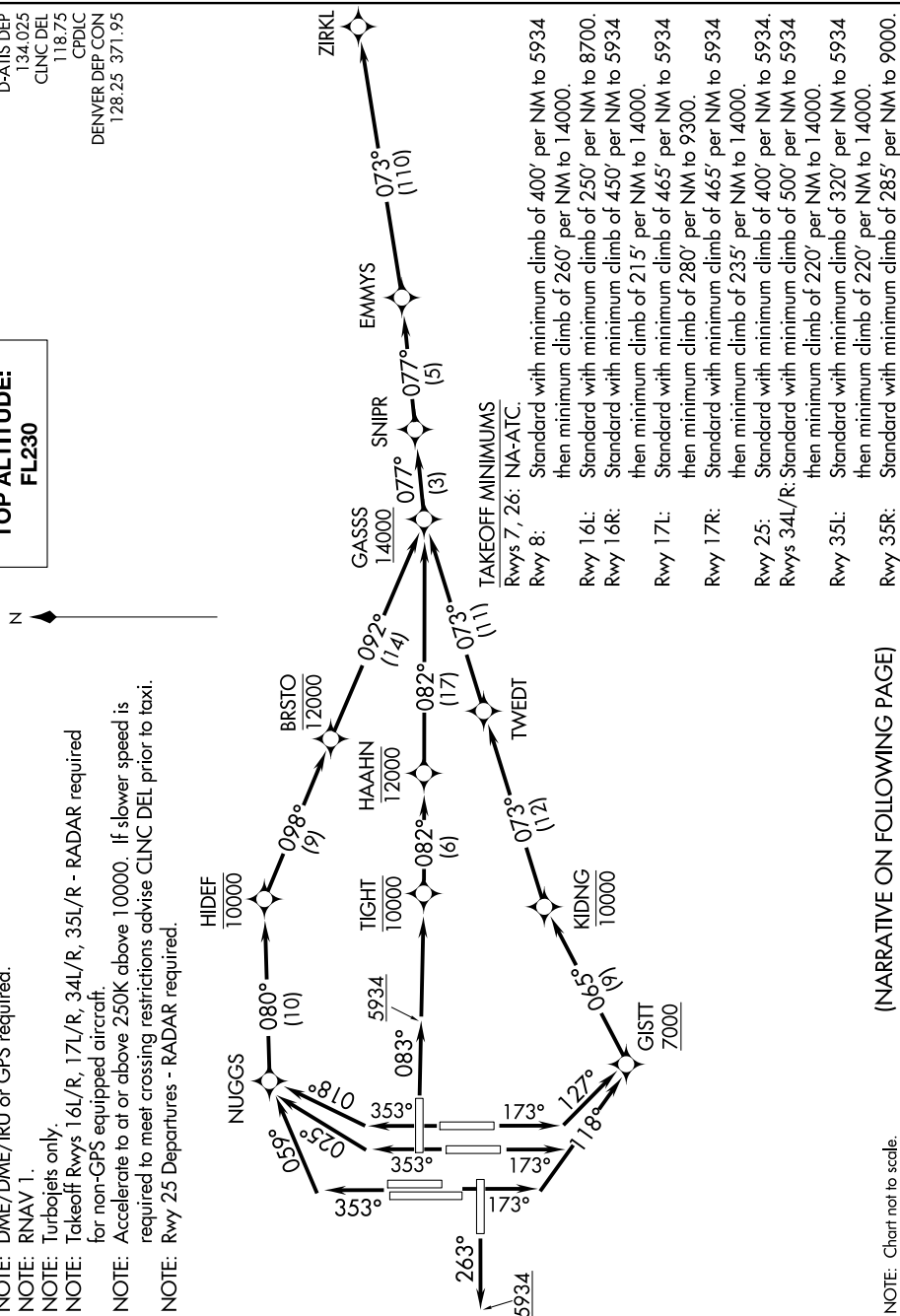
NOTE: Takeoff Rwys 16L/R, 17L/R, 34L/R, 35L/R - RADAR required

for non-GPS equipped aircraft.

NOTE: Accelerate to at or above 250K above 10000. If slower speed is required to meet crossing restrictions advise CLINC DEL prior to taxi.

NOTE: Rwy 25 Departures - RADAR required.

TOP ALTITUDE:
FL230



NOTE: Chart not to scale.

(NARRATIVE ON FOLLOWING PAGE)

SW-1, 31 DEC 2020 to 28 JAN 2021

EMMYS SEVEN DEPARTURE (RNAV)

(EMMYS7.ZIRKL) 30JAN20

DENVER, COLORADO

DENVER INTL (DEN)