
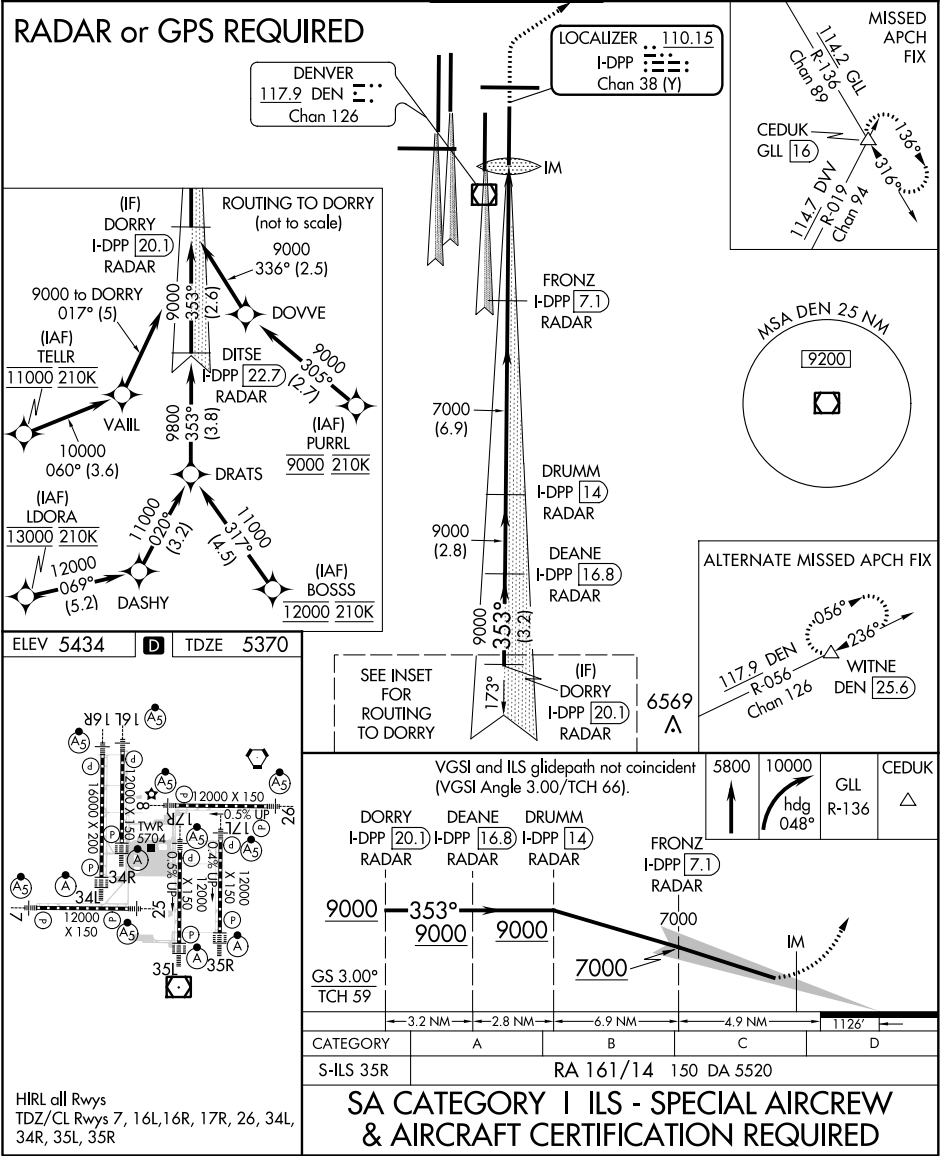


LOC/DME I-DPP 110.15 Chan 38(Y)	APP CRS 353°	Rwy Idg 12000 TDZE 5370 Apt Elev 5434
---	------------------------	--

ILS RWY 35R (SA CAT I)
DENVER INTL (DEN)

T	Requires specific OPSPEC, MSPEC, or LOA approval and use of HUD to DH. Simultaneous approach authorized with Rwy 34L, Rwy 34R, and Rwy 35L.			ALSF-2 	MISSED APPROACH: Climb to 5800 then climbing right turn to 10000 on heading 048° and on GLL VORTAC R-136 to CEDUK/GLL 16 DME and hold.		
	D-ATIS ARR 125.6 379.9 DEP 134.025	DENVER APP CON 119.3 307.3 120.35 379.3 (NORTH) (SOUTH)		DENVER TOWER 132.35 239.275	GND CON 121.85 377.1	CLNC DEL 118.75	CPDLC



SW-1, 31 DEC 2020 to 28 JAN 2021

SW-1, 31 DEC 2020 to 28 JAN 2021