
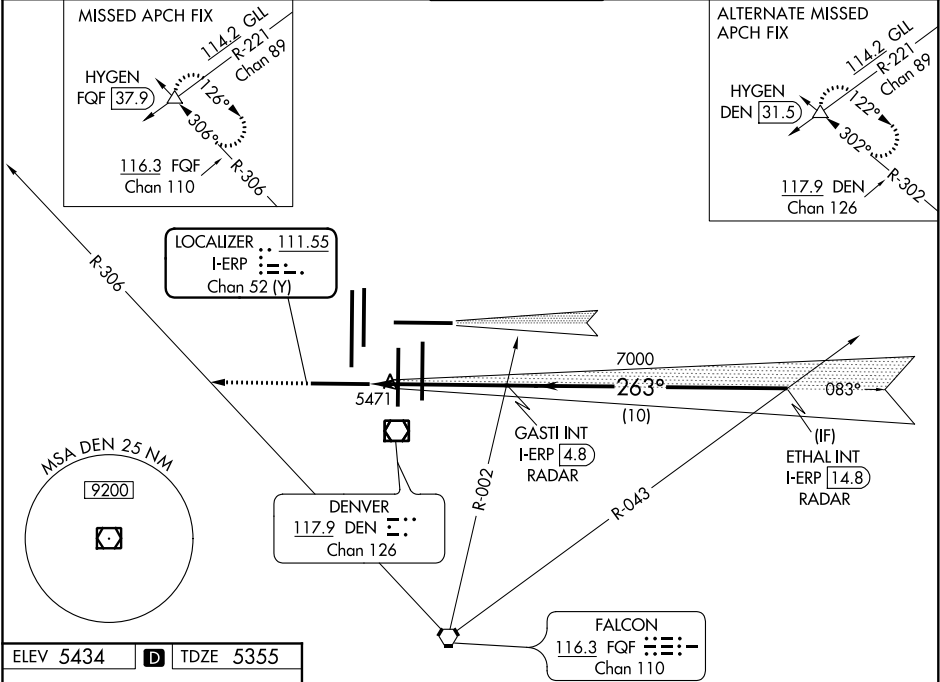


LOC/DME I-ERP <b>111.55</b> Chan <b>52(Y)</b>	APP CRS <b>263°</b>	Rwy Idg <b>12000</b> TDZE <b>5355</b> Apt Elev <b>5434</b>
---	------------------------	--

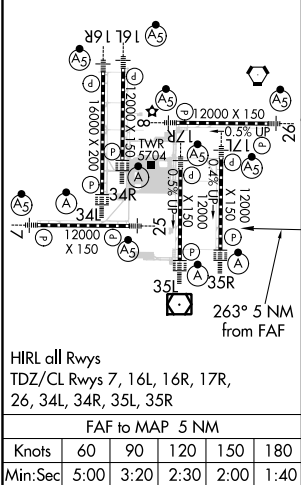
ILS or LOC RWY 25  
DENVER INTL (DEN)

<b>▽</b> Simultaneous approach authorized with Rwy 26. For inoperative MALSR, increase S-LOC 25 Cat C and D visibility to RVR 5500. **RVR 1800 authorized with use of FD or AP or HUD to DA.	MALSR 	MISSED APPROACH: Climb to 10000 on heading 263° and on FQF VORTAC R-306 to HYGEN INT/FQF 37.9 DME and hold.
---	--	---

D-ATIS ARR <b>125.6 379.9</b> DEP <b>134.025</b>	DENVER APP CON <b>119.3 307.3 120.35 379.3</b> (NORTH) (SOUTH)	DENVER TOWER <b>128.75 273.55</b>	GND CON <b>127.5 379.175</b>	CLNC DEL <b>118.75</b>	CPDLC
--	--	--------------------------------------	---------------------------------	---------------------------	-------



ELEV <b>5434</b>	<b>D</b>	TDZE <b>5355</b>
------------------	----------	------------------



RADAR REQUIRED			
10000 hdg 263° *LOC only	FQF R-306	HYGEN △	VGSI and ILS glidepath not coincident (VGSI Angle 3.00/TCH 83).
*I-ERP 0.7			
GASTI INT I-ERP 4.8 RADAR			
ETHAL INT I-ERP 14.8 RADAR			
7000 263° 10000 GS 3.00° TCH 55			
0.9 NM 4.1 NM 10 NM			
CATEGORY	A	B	C D
S-ILS 25 **	5555/24 200 (200-½)		
S-LOC 25	5720/24 365 (300-½)		5720/35 365 (300-¾)

SW-1, 31 DEC 2020 to 28 JAN 2021

SW-1, 31 DEC 2020 to 28 JAN 2021