

LOC/DME I-OUF <b>111.1</b> Chan <b>48</b>	APP CRS <b>353°</b>	Rwy Idg <b>12000</b> TDZE <b>5354</b> Apt Elev <b>5434</b>
---	------------------------	--

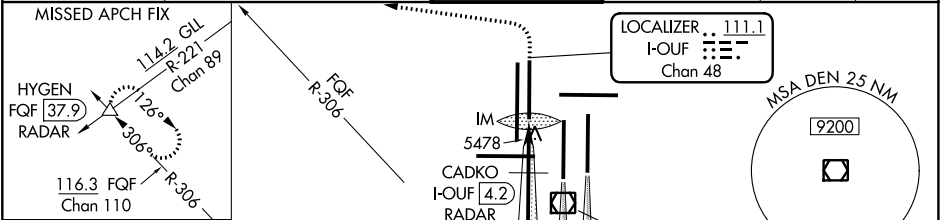
ILS or LOC RWY 34R  
DENVER INTL (DEN)

▼ S-LOC 34R DME or RADAR required. Simultaneous approach authorized with Rwy 35L/R. For inoperative ALSF, increase S-LOC Cat C/D visibility to RVR 5500.

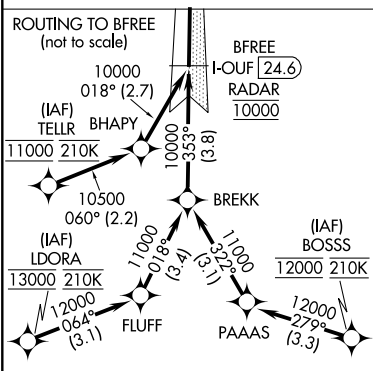


MISSED APPROACH: Climb to 5800 then climbing left turn to 10000 on heading 270° and on FQF VORTAC R-306 to HYGEN/FQF 37.9 DME/RADAR and hold.

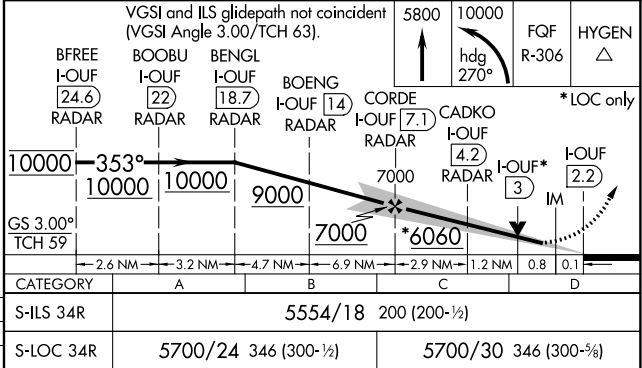
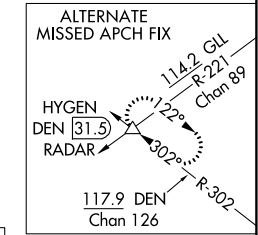
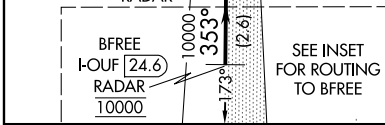
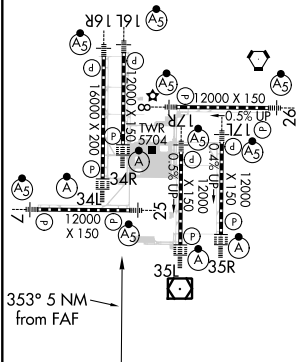
D-ATIS ARR <b>379.9</b> DEP <b>134.025</b>	DENVER APP CON <b>119.3 307.3 120.35 379.3</b> (NORTH) (SOUTH)	DENVER TOWER <b>135.3 351.95</b>	GND CON <b>127.5 379.175</b>	CLNC DEL <b>118.75</b>	CPDLC
--	--	-------------------------------------	---------------------------------	---------------------------	-------



RADAR or GPS REQUIRED



ELEV 5434	D	TDZE 5354
TDZ/CL Rwy 7, 16L, 16R, 17R, 26, 34L, 34R, 35L, 35R HIRL all Rwy		



SW-1, 31 DEC 2020 to 28 JAN 2021

SW-1, 31 DEC 2020 to 28 JAN 2021