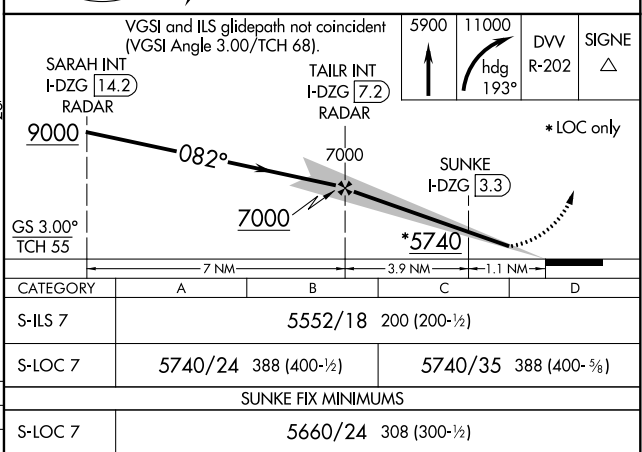
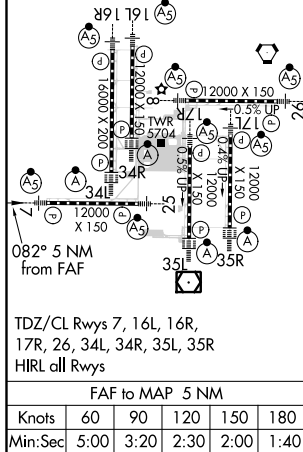
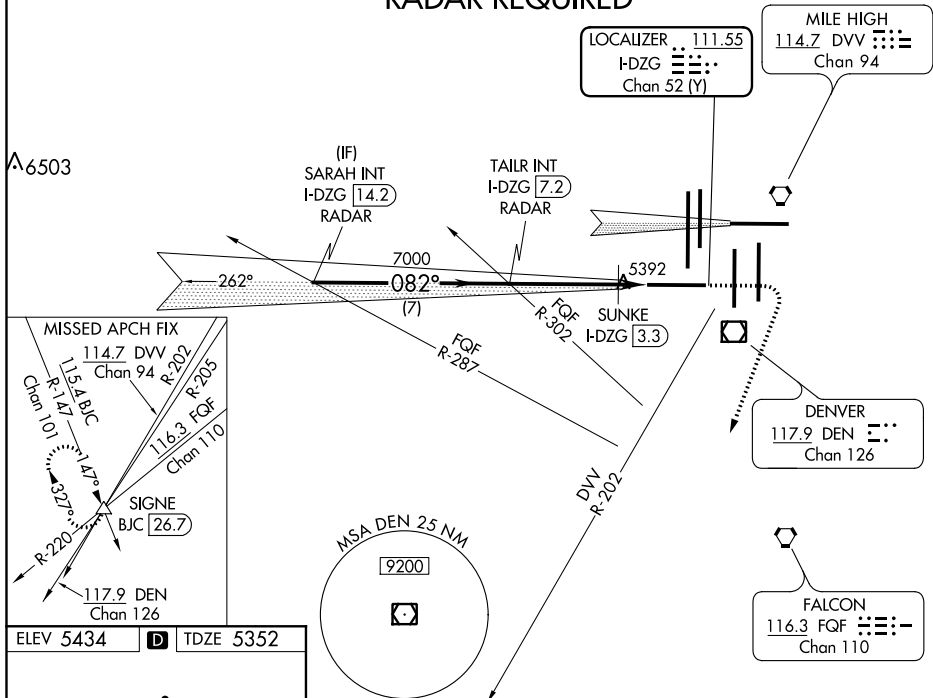


ILS or LOC RWY 7
DENVER INTL (DEN)

MISSED APPROACH: Climb to 5900, then climbing right turn to 11000 on heading 193° and on DVV VORTAC R-202 to SIGNE INT/BJC 26.7 DME and hold.

D-ATIS		DENVER APP CON		DENVER TOWER		GND CON	CLNC DEL	CPDLC
ARR	125.6 379.9	119.3 307.3	120.35 379.3	128.75	273.55	127.5 379.175	118.75	
DEP	134.025	(NORTH)	(SOUTH)					

RADAR REQUIRED



SW-1, 31 DEC 2020 to 28 JAN 2021

SW-1, 31 DEC 2020 to 28 JAN 2021