

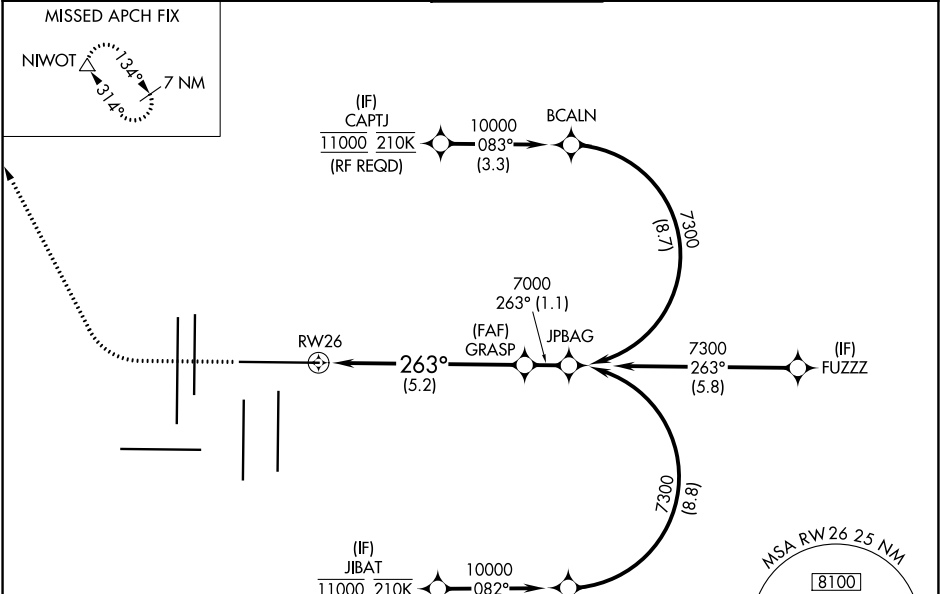
APP CRS	Rwy Idg	12000
263°	TDZE	5309
	Apt Elev	5434

RNAV (RNP) Z RWY 26

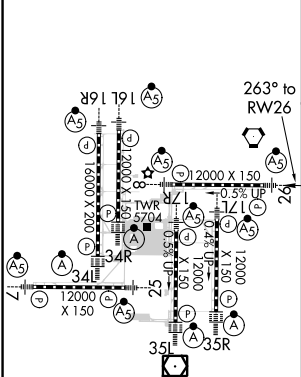
DENVER INTL (DEN)

RNP AR APCH.	MALSR	MISSED APPROACH: Climb to 6000 then climbing right turn to 10000 direct NIWOT and hold.
▼ Simultaneous approach authorized. For uncompensated Baro-VNAV systems, procedure NA below -23°C or above 54°C. For inop ALS, increase RNP 0.15 all Cats visibility to RVR 4000, and increase RNP 0.30 all Cats visibility to RVR 4500.		



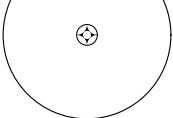
D-ATIS	DENVER APP CON	DENVER TOWER	GND CON	CLNC DEL	CPDLC
ARR 125.6 379.9 DEP 134.025	119.3 307.3 120.35 379.3 (NORTH) (SOUTH)	132.35 239.275	121.85 377.1	118.75	



ELEV 5434	D	TDZE 5309
-----------	---	-----------



HIRL all Rwy's
TDZ/CL Rwy's 7, 16L, 16R, 17R,
26, 34L, 34R, 35L, 35R

<div><div><div><div><div></div><div>6000</div><div>↑</div></div><div><div>10000</div><div></div></div><div><div>NIWOT</div><div></div></div></div><div><div><div>(3.3)</div><div>HOTDG</div></div><div></div></div></div><div><div><div>A 5733</div><div><div>VGSi and RNAV glidepath not coincident (VGSi Angle 3.00/TCH 70).</div><div><div><div><div><div><div></div><div>RW26</div></div><div><div><div><div><div></div><div>263°</div><div>7000</div></div><div><div><div><div><div></div><div>GRASP</div><div>7000</div></div><div><div><div><div><div></div><div>7000</div></div><div><div><div><div><div></div><div>GP 3.00°</div><div>TCH 55</div></div></div></div></div></div><div><div>See planview for multiple IF locations.</div><div>5.2 NM</div></div></div></div></div><table><tr><td>CATEGORY</td><td>A</td><td>B</td><td>C</td><td>D</td></tr><tr><td>RNP 0.15 DA</td><td colspan="4">5566/24 257 (200-½)</td></tr><tr><td>RNP 0.30 DA</td><td colspan="4">5611/24 302 (200-½)</td></tr></table><div>AUTHORIZATION REQUIRED</div></div></div></div></div></div></div></div></div></div></div></div></div></div>					CATEGORY	A	B	C	D	RNP 0.15 DA	5566/24 257 (200-½)				RNP 0.30 DA	5611/24 302 (200-½)			
CATEGORY	A	B	C	D															
RNP 0.15 DA	5566/24 257 (200-½)																		
RNP 0.30 DA	5611/24 302 (200-½)																		