


RNAV (RNP) Z RWY 34R
DENVER INTL (DEN)

ALSF-2 	MISSED APPROACH: Climb to 6000 then climbing left turn to 10000 direct HYGEN and hold.
---	---

MISSED APCH FIX

HYGEN

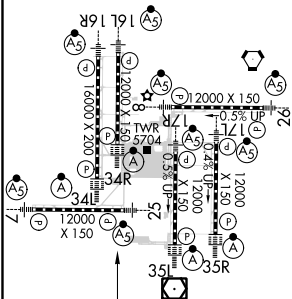
29°

7 NM

309°

RADAR REQUIRED

HIRL all Rwys
TDZ/CL Rwys 7, 16L, 16R, 17R,
26, 34L, 34R, 35L, 35R



BSAYN

VGS and RNAV glidepath not coincident (VGS Angle 3.00/TCH 63).

6000

10000

HYGEN

7700

353°

7000

GP 3.00°
TCH 59

2.5 NM

5 NM

RW34R

See planview for multiple IF locations.

CATEGORY	A	B	C	D
RNP 0.10 DA		5739/40	385 (400-¾)	
RNP 0.20 DA		5849/60	495 (500-1¼)	
RNP 0.30 DA		5980-1 5/8	626 (600-1 5/8)	

AUTHORIZATION REQUIRED