

DENVER, COLORADO

AL-9077 (FAA)

18032

APP CRS	Rwy Idg	12000
353°	TDZE	5434
	Apt Elev	5434

RNAV (RNP) Z RWY 35L
DENVER INTL (DEN)

T

For uncompensated Baro-VNAV systems, procedure NA below -25°C (-13°F) or above 46°C (115°F). GPS required. For inoperative ALSF, increase RNP 0.10 all Cats visibility to RVR 4500 and RNP 0.30 all Cats visibility to RVR 5000. Simultaneous approach authorized. Use of FD or AP providing RNAV track guidance required during simultaneous operations.

ALSF-2



MISSED APPROACH: Climb to 10000, then right turn direct GLL VOR/DME and hold.

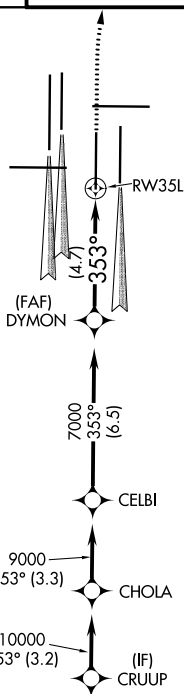
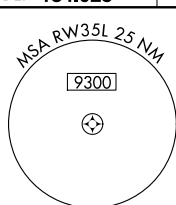
D-ATIS	DENVER APP CON			
ARR 125.6 379.9	119.3	307.3	120.35	379.3
DEP 134.025	(NORTH)		(SOUTH)	

DENVER TOWER
133.3 322.45

GND CON
121.85 377.1

CLNC DEL
118.75

CPDLC



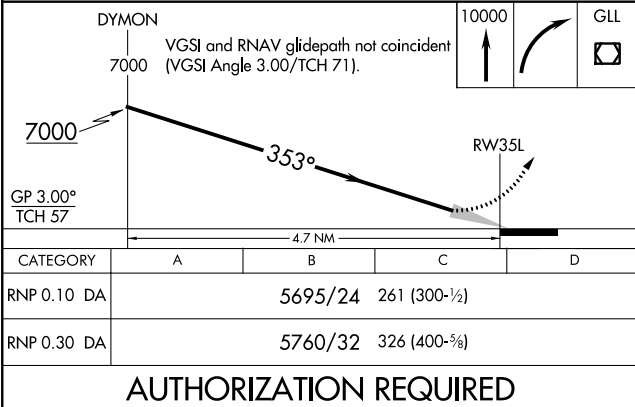
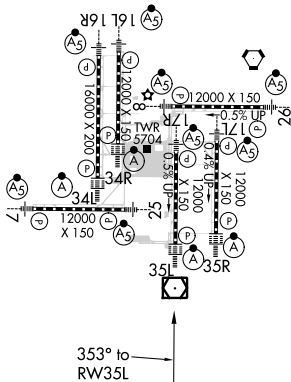
MISSED APCH FIX



RADAR REQUIRED

ELEV 5434	D	TDZE 5434
-----------	----------	-----------

HIRL all Rwy's
TDZ/CL Rwy's 7, 16L, 16R, 17R,
26, 34L, 34R, 35L, 35R



DENVER, COLORADO
Orig-C 01FEB18

39°52'N-104°40'W

DENVER INTL (DEN)

RNAV (RNP) Z RWY 35L

SW-1, 31 DEC 2020 to 28 JAN 2021