

RNAV (RNP) Z RWY 35R  
DENVER INTL (DEN)

DENVER INTL (DEN)

APP CRS <b>353°</b>	Rwy Idg <b>12000</b> TDZE <b>5370</b> Apt Elev <b>5434</b>
------------------------	--

**V** For uncompensated Baro-VNAV systems, procedure NA below -25°C (-13°F) or above 45°C (114°F). GPS required. For inoperative ALSF, increase RNP 0.10 all Cats visibility to RVR 4500 and RNP 0.30 all Cats visibility to RVR 5000. Simultaneous approach authorized. Use of FD or AP providing RNAV track guidance required during simultaneous operations.

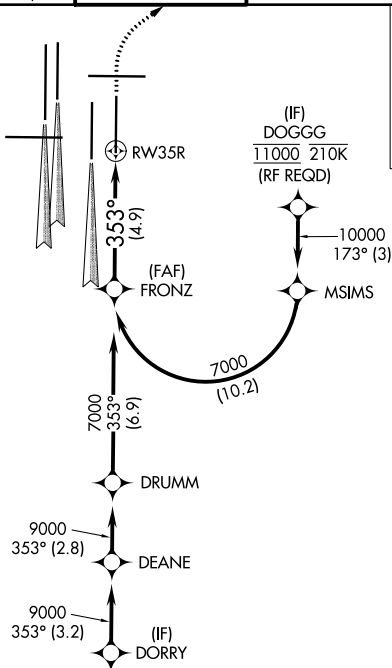
ALSF-2



**MISSED APPROACH:** Climb to 5900, then climbing right turn to 8000 direct YIMZO and hold.

D-ATIS		DENVER APP CON		DENVER TOWER		GND CON		CLNC DEL		CPDLC
ARR	125.6 379.9	119.3 307.3	120.35 379.3	132.35	239.275	121.85	377.1	118.75		
DEP	134.025	(NORTH)	(SOUTH)							

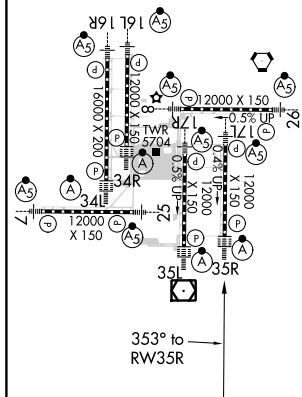
MISSED APCH FIX



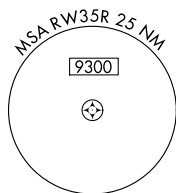
## RADAR REQUIRED

ELEV 5434	<b>D</b>	TDZE 5370
-----------	----------	-----------

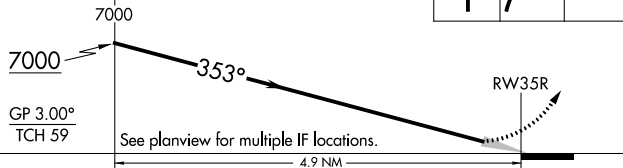
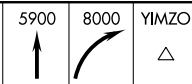
HIRL all Rwys  
TDZ/CL Rwys 7, 16L, 16R, 17R,  
26, 34L, 34R, 35L, 35R



6569



VGSI and RNAV glidepath not coincident  
(VGSI Angle 3.00/TCH 66).



CATEGORY	A	B	C	D
RNP 0.10 DA		5631/24	261 (200-½)	
RNP 0.30 DA		5702/32	332 (300-⅝)	

**AUTHORIZATION REQUIRED**