
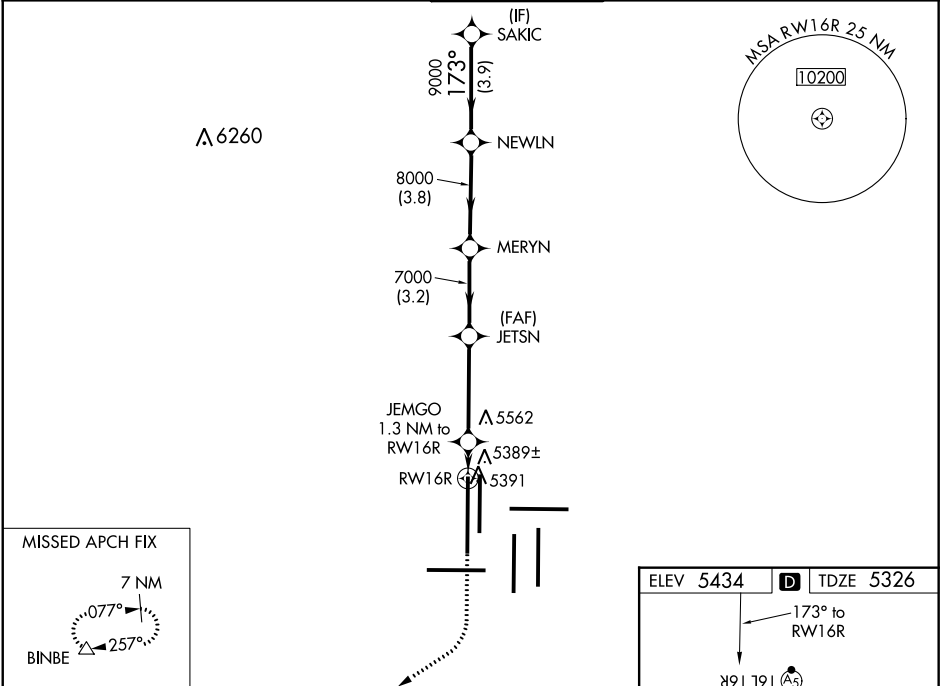





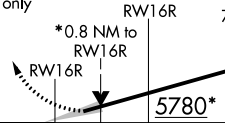
WAAS CH <b>82628</b> <b>W16B</b>	APP CRS <b>173°</b>	Rwy Idg <b>16000</b> TDZE <b>5326</b> Apt Elev <b>5434</b>
--	------------------------	--

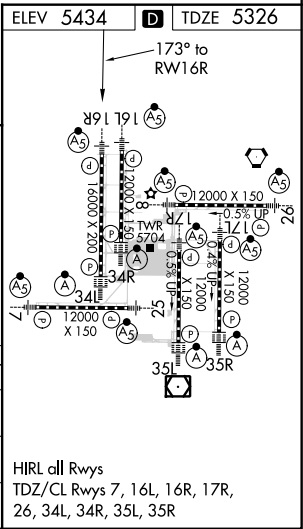
RNAV (GPS) Y RWY 16R  
DENVER INTL (DEN)

RNP APCH.	MALSR 	MISSED APPROACH: Climb to 5900 then climbing right turn to 10000 direct BINBE and hold, continue climb-in-hold to 10000.
RADAR required. ▼ For uncompensated Baro-VNAV systems, LNAV/VNAV NA below -25°C or above 46°C. Simultaneous approach authorized with Rwy 17L/R. LNAV procedure NA during simultaneous operations. For inoperative MALSR, increase LNAV/VNAV all Cats visibility to RVR 4500, LNAV Cat C/D visibility to RVR 4500. Use of FD or AP providing RNAV track guidance required during simultaneous operations.		

D-ATIS ARR <b>125.6 379.9</b> DEP <b>134.025</b>	DENVER APP CON <b>119.3 307.3 120.35 379.3</b> (NORTH) (SOUTH)	DENVER TOWER <b>135.3 351.95</b>	GND CON <b>127.5 379.175</b>	CLNC DEL <b>118.75</b>	CPDLC
--	--	-------------------------------------	---------------------------------	---------------------------	-------



5900	10000	BINBE	VGSI and RNAV glidepath not coincident (VGSI Angle 3.00/TCH 71).					
			JEMGO 1.3 NM to RW16R	JETSN 7000	MERYN	NEWLN	SAKIC	
*LNAV only								
								
			0.8	0.5	3.8 NM	3.2 NM	3.8 NM	3.9 NM
CATEGORY			A		B	C		D
LPV DA			5526/18		200 (100-½)			
LNAV/ VNAV DA			5589/24		263 (200-½)			
LNAV MDA			5660/24 334 (300-½)		5660/26		334 (300-½)	



SW-1, 31 DEC 2020 to 28 JAN 2021

SW-1, 31 DEC 2020 to 28 JAN 2021