

DENVER, COLORADO

AL-9077 (FAA)

17341

WAAS CH 40428 W25A	APP CRS 263°	Rwy Idg 12000 TDZE 5355 Apt Elev 5434
--	------------------------	--

RNAV (GPS) Y RWY 25
DENVER INTL (DEN)

V For uncompensated Baro-VNAV systems, LNAV/VNAV NA below -25°C (-13°F) or above 46°C (116°F). Simultaneous approach authorized with Rwy 26. DME/DME RNP-0.3 NA. Use of FD or AP providing track guidance required during simultaneous operations. LNAV procedure NA during simultaneous operations. For inoperative MALSR, increase LNAV/VNAV min Cats visibility to RVR 4500. # RVR 1800 authorized with use of FD or AP or HUD to DA.

MALSR



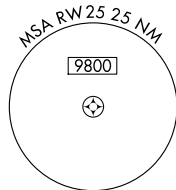
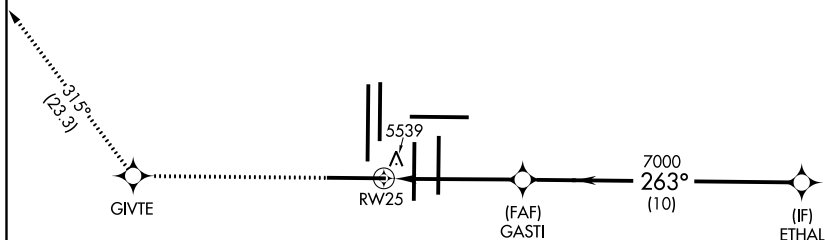
MISSED APPROACH: Climb to 10000 direct GIVTE and on track 315° to HYGEN and hold.

	D-ATIS	DENVER APP CON		DENVER TOWER		GND CON	CLNC DEL	CPDLC
ARR	125.6 379.9	119.3	307.3	120.35	379.3			
DEP	134.025	(NORTH)	(SOUTH)	128.75	273.55	127.5 379.175	118.75	

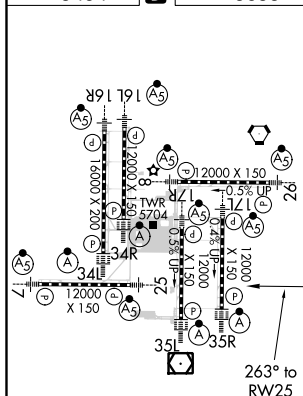
MISSED APCH FIX

Diagram illustrating the electron's path in a hydrogen atom. The electron starts at a distance of 7 nm from the nucleus and moves in a circular path with a radius of 129 nm. The angle between the initial position and the final position is 309 degrees.

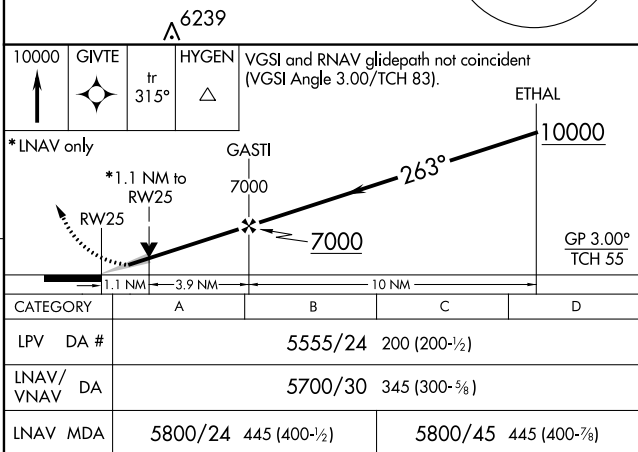
RADAR REQUIRED



ELEV 5434	D	TDZE 5355
-----------	----------	-----------



HIRL all Rwys
TDZ/CL Rwys 7, 16L, 16R, 17R,
26, 34L, 34R, 35L, 35R



DENVER, COLORADO

Amdt 1B 07DEC17

DENVER INTL (DEN)

39°52'N-104°40'W

RNAV (GPS) Y RWY 25

SW-1, 31 DEC 2020 to 28 JAN 2021