

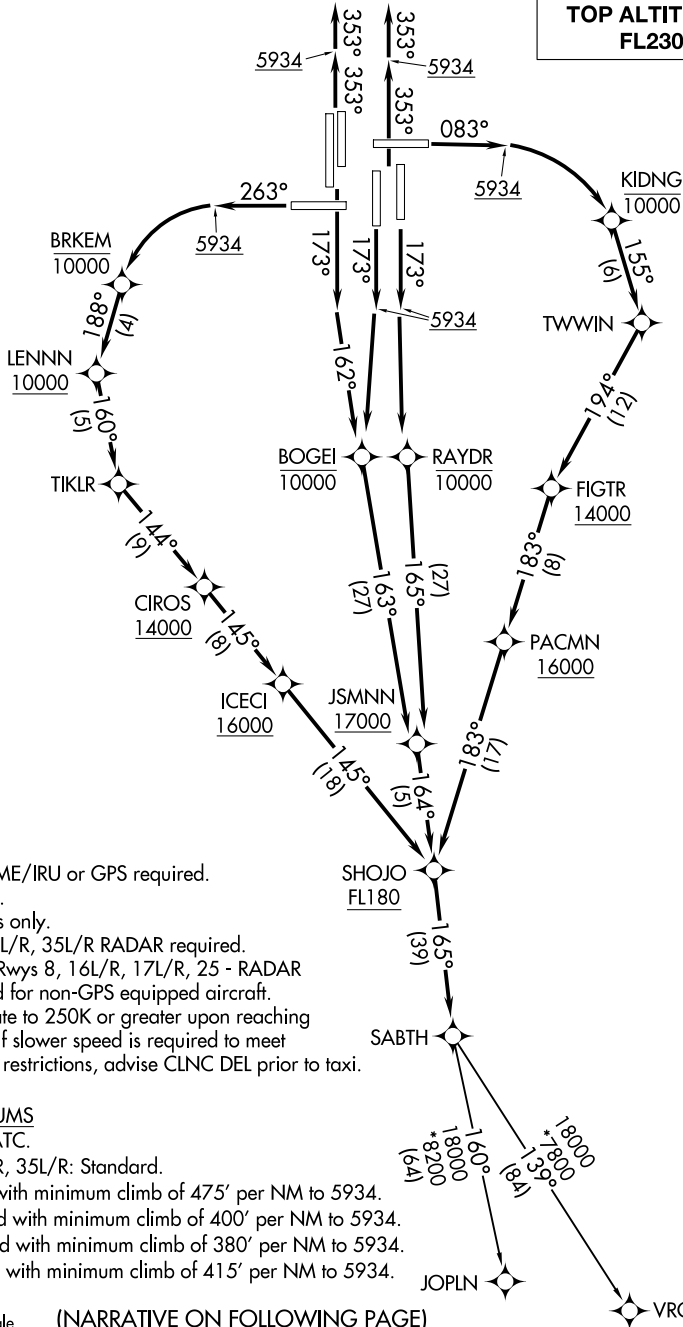
SABTH TWO DEPARTURE (RNAV)

AL-9077 (FAA)

DENVER INTL (DEN)  
DENVER, COLORADO

D-ATIS DEP  
134.025  
CLNC DEL  
118.75  
CPDLC  
DENVER DEP CON  
128.45 251.075

TOP ALTITUDE:  
FL230



- NOTE: DME/DME/IRU or GPS required.  
NOTE: RNAV 1.  
NOTE: Turbojets only.  
NOTE: Rwy 34L/R, 35L/R RADAR required.  
NOTE: Takeoff Rwy 8, 16L/R, 17L/R, 25 - RADAR required for non-GPS equipped aircraft.  
NOTE: Accelerate to 250K or greater upon reaching 10000. If slower speed is required to meet crossing restrictions, advise CLNC DEL prior to taxi.

TAKEOFF MINIMUMS

- Rwys 7, 26: NA-ATC.  
Rwy 17L/R, 34L/R, 35L/R: Standard.  
Rwy 8: Standard with minimum climb of 475' per NM to 5934.  
Rwy 16L: Standard with minimum climb of 400' per NM to 5934.  
Rwy 16R: Standard with minimum climb of 380' per NM to 5934.  
Rwy 25: Standard with minimum climb of 415' per NM to 5934.

NOTE: Chart not to scale.

(NARRATIVE ON FOLLOWING PAGE)

SABTH TWO DEPARTURE (RNAV)