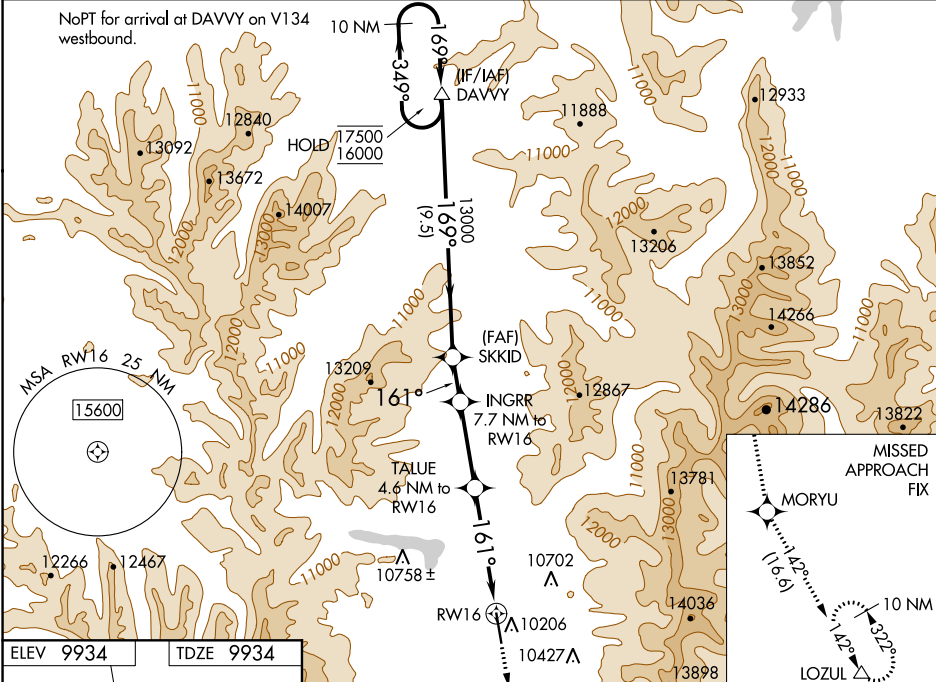


WAAS CH <b>63142</b> <b>W16A</b>	APP CRS <b>161°</b>	Rwy Idg TDZE Apt Elev	<b>6400</b> <b>9934</b> <b>9934</b>
--	------------------------	-----------------------------	---

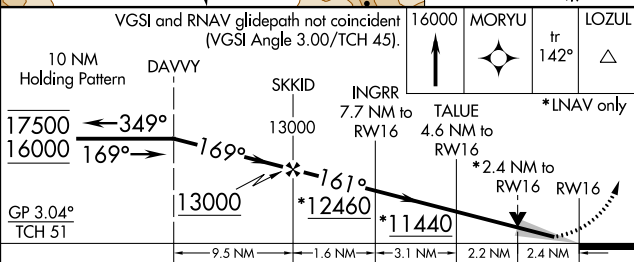
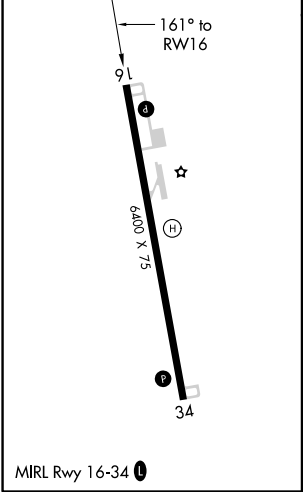
RNAV (GPS) RWY 16  
LAKE COUNTY (LXV)

RNP APCH.	MISSED APPROACH: Climb to 16000 direct MORYU and on track 142° to LOZUL and hold, continue climb-in-hold to 16000. #Missed approach requires minimum climb of 240 feet per NM to 12500.
For uncompensated Baro-VNAV systems, LNAV/VNAV NA below -26°C or above 54°C. When local altimeter setting not received, procedure NA. -27°C	

ASOS <b>118.375</b>	DENVER CENTER <b>119.85 363.15</b>	UNICOM <b>122.8 (CTAF) 0</b>
------------------------	---------------------------------------	---------------------------------



ELEV 9934	TDZE 9934
-----------	-----------



CATEGORY	A	B	C	D
LPV DA#	10184-1	250 (300-1)		NA
LPV DA	10546-1¾	612 (700-1¾)		NA
LNAV/VNAV DA	10542-1¾	608 (700-1¾)		NA
LNAV MDA	10740-1 806 (900-1)	10740-1¼ 806 (900-1¼)	10740-2½ 806 (900-2½)	NA
CIRCLING	10740-1 806 (900-1)	11040-1½ 1106 (1200-1½)	12020-3 2086 (2100-3)	NA

SW-1, 31 DEC 2020 to 28 JAN 2021

SW-1, 31 DEC 2020 to 28 JAN 2021