

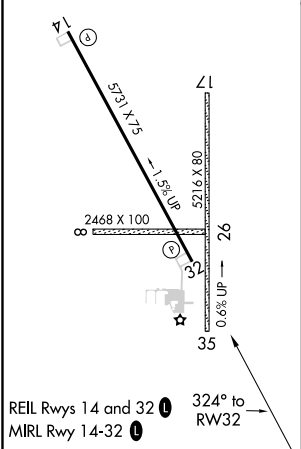
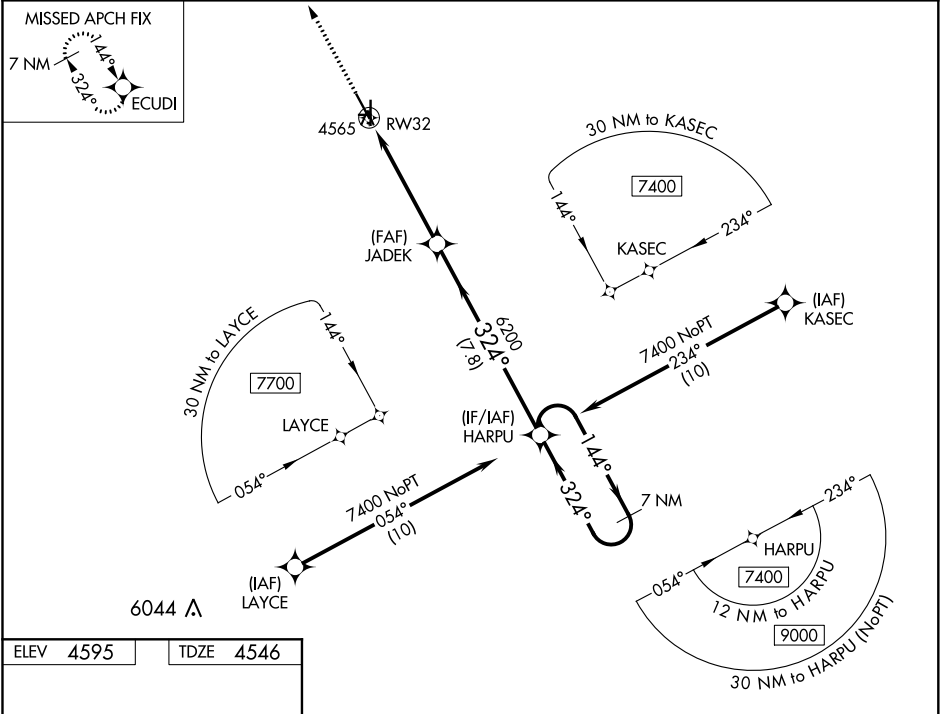
WAAS CH 86438 W32A	APP CRS 324°	Rwy Idg TDZE 4546 Apt Elev 4595
--	------------------------	---

RNAV (GPS) RWY 32
FORT MORGAN MUNI (FMM)

⚠ DME/DME RNP-0.3 NA. When local altimeter setting not received, use Akron altimeter setting: increase all DA to 4879 feet and all visibilities 1/8 mile; increase all MDA 100 feet and all Cat C and D visibilities 1/4 mile. Night landing: Rwy 8, 17, 26, 32, 35 NA. Helicopter visibility reduction below 1 SM NA.

MISSED APPROACH:
Climb to 7400 direct ECUDI and hold.

AWOS-3 132.95	DENVER CENTER 118.475 225.4	UNICOM 123.05 (CTAF) 0
-------------------------	---------------------------------------	----------------------------------



7400	ECUDI	VGSi and RNAV glidepath not coincident (VGSi Angle 3.00/TCH 27).		7 NM Holding Pattern
JADEK		HARPU		
6200		6200		
RW32		324°		
5.1 NM		7.8 NM		
CATEGORY	A	B	C	D
LPV DA	4796-1 250 (300-1)			
LNNAV/VNAV DA	4796-1 250 (300-1)			
LNNAV MDA	4820-1 274 (300-1)			
CIRCLING	5040-1 445 (500-1)	5080-1 485 (500-1)	5120-1½ 525 (600-1½)	5340-2½ 745 (800-2½)

SW-1, 31 DEC 2020 to 28 JAN 2021

SW-1, 31 DEC 2020 to 28 JAN 2021