

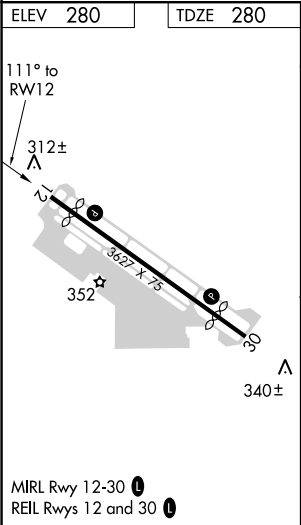
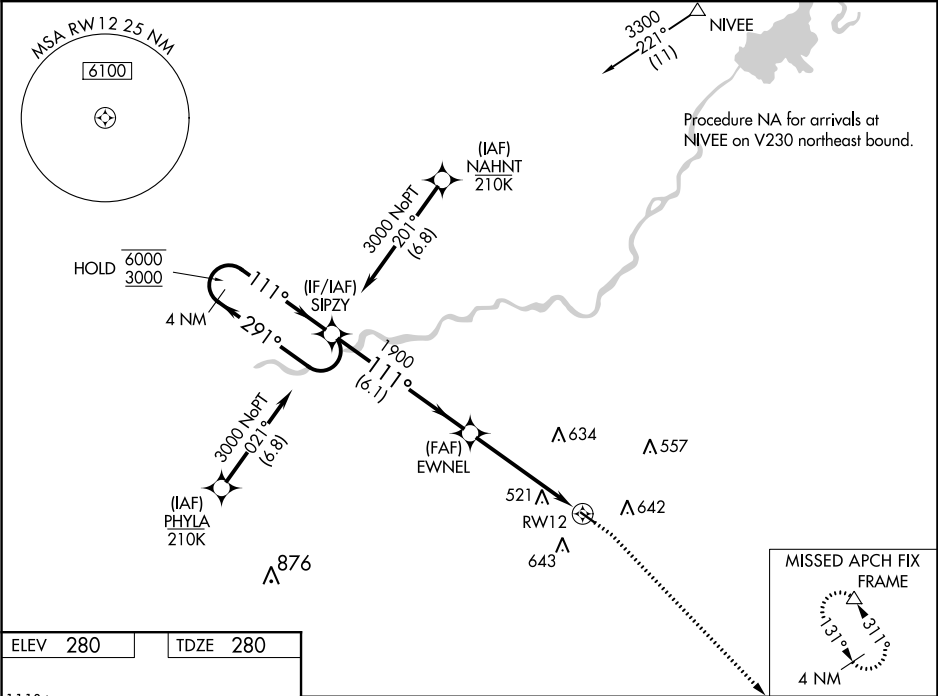
WAAS CH 49242 W12A	APP CRS 111°	Rwy Idg TDZE Apt Elev	3212 280 280
--	------------------------	-----------------------------	---

RNAV (GPS) RWY 12

FRESNO CHANDLER EXECUTIVE (FCH)

RNP APCH.	MISSED APPROACH: Climb to 800 then climbing right turn to 2000 direct FRAME and hold.
▼ For uncompensated Baro-VNAV systems, LNAV/VNAV NA below -1° C or above 54°C. ▲ Rwy 12 helicopter visibility reduction below ¾ SM NA. Circling Rwy 30 NA at night.	

AWOS-3 135.225	FRESNO APP CON 119.0 323.25	CLNC DEL 119.0	UNICOM 123.0 (CTAF) 0
--------------------------	---------------------------------------	--------------------------	---------------------------------



4 NM

Holding Pattern

800

2000

FRAME

↑

↷

△

SIPZY

6000

3000

← 291°

111° →

GP 3.00°

TCH 40

EWNEL

1900

1900

111°

1.4 NM to RW12

*LNAV only

RW12

6.1 NM

3.6 NM

1.4 NM

CATEGORY	A	B	C	D
LPV DA	530-¾ 250 (300-¾)			NA
LNAV/VNAV DA	809-1½ 529 (600-1½)			NA
LNAV MDA	780-1	500 (500-1)	780-1⅜ 500 (500-1⅜)	NA
CIRCLING	960-1	680 (700-1)	960-2 680 (700-2)	NA