

TACAN CZQ Chan 76 (112.9)	APP CRS 307°	Rwy Idg TDZE Apt Elev	29R 9227 333 336	29L 8008 331 336
---	------------------------	-----------------------------	--	--

TACAN RWY 29R

FRESNO YOSEMITE INTL (FAT)

▼

Rwy 29R helicopter visibility reduction below RVR 4000 NA.

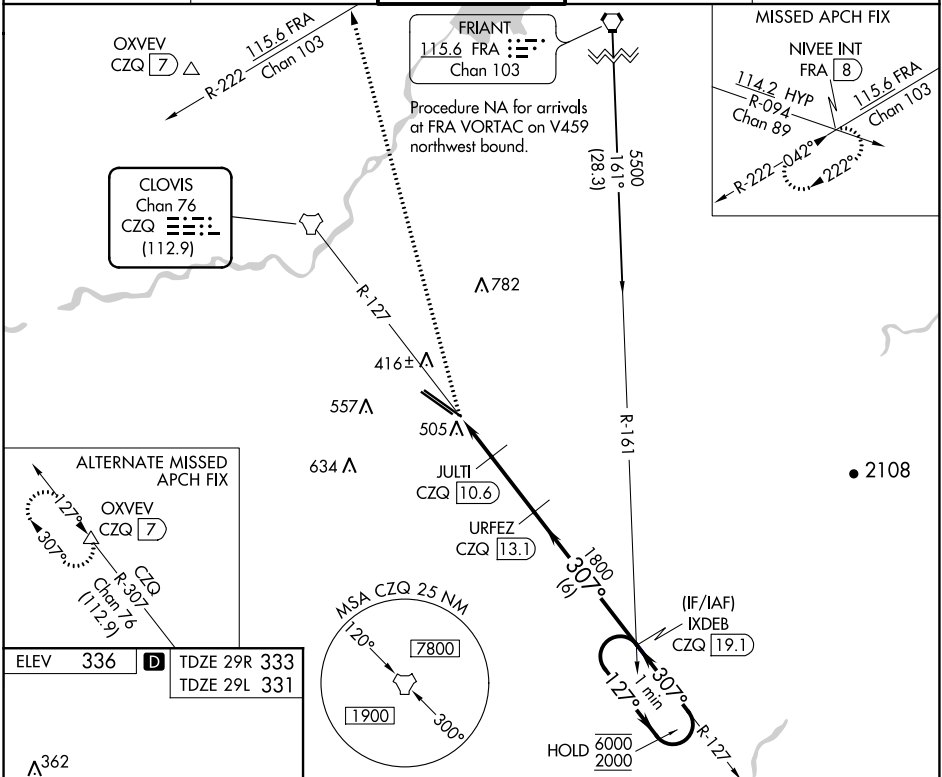
▲

For inop ALS, increase S-29R Cat A/B visibility to RVR 5500 and Cat E visibility to 1 ¼ mile.

ALSF-2
Rwy 29R

MISSED APPROACH: Climb to 5500 on heading 330° and FRA VORTAC R-222 to NIVEE INT/FRA 8 DME and hold, continue climb-in-hold to 5500.

ATIS 121.35 273.6	FRESNO APP CON 119.6 351.95	FRESNO TOWER 118.2 251.1	GND CON 121.7 348.6	CLNC DEL 124.35 348.6
-----------------------------	---------------------------------------	------------------------------------	-------------------------------	---------------------------------



ELEV 336	D	TDZE 29R 333	TDZE 29L 331
----------	----------	--------------	--------------

