

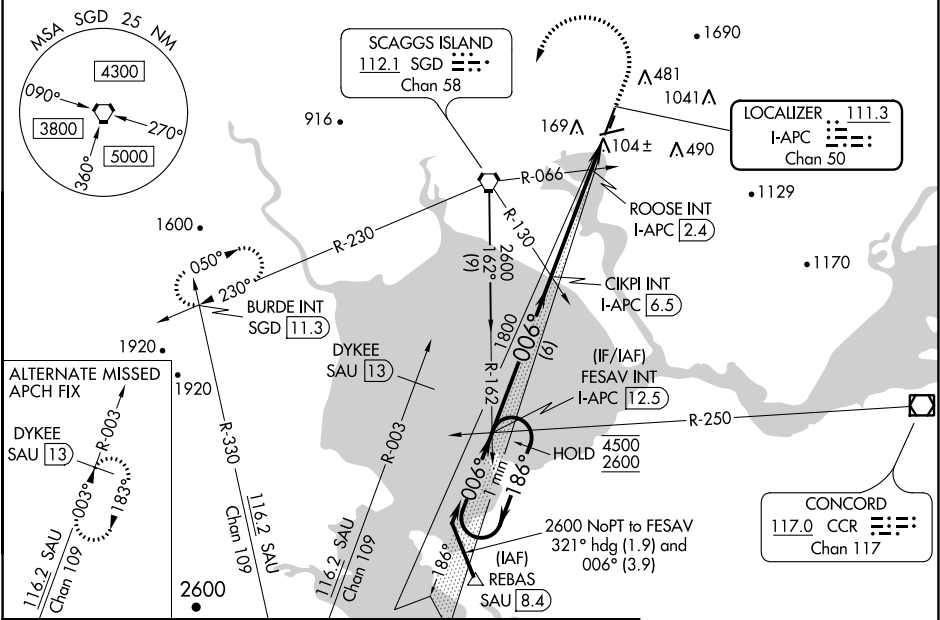
LOC/DME I-APC	APP CRS	Rwy Idg	5930
111.3	006°	TDZE	17
Chan 50		Apt Elev	36

ILS or LOC Z RWY 1L
NAPA COUNTY (APC)

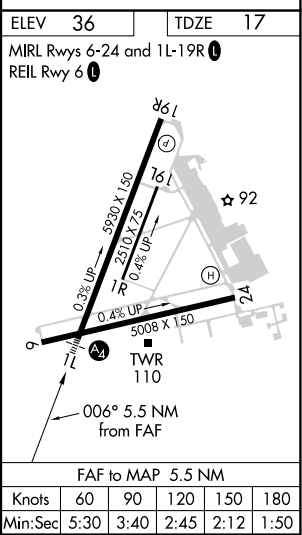
Autopilot coupled approach NA below 530. Inop table does not apply to S-ILS 1L. Circling Cats A/B/C NA northeast of Rwy 19R and 24. Circling Cat D NA east of Rwy 19L-1R. Circling Rwy 6 NA at night.

MALS
MISSED APPROACH: Climb to 500 then climbing left turn to 3200 direct SGD VORTAC and on SGD VORTAC R-230 to BURDE INT/SGD 11.3 DME and hold, continue climb-in-hold to 3200.

ATIS	OAKLAND CENTER	NAPA TOWER ★	GND CON	CLNC DEL	UNICOM
124.05	127.8 353.5	118.7 (CTAF) 257.8	121.7	127.85	122.95



One Minute Holding Pattern		FESAV INT I-APC 12.5		500	3200	SGD	SGD R-230	BURDE INT
		CIKPI INT I-APC 6.5		↑	↷	⬡		
*LOC only								
4500 ←186° 006°→ 006° 1800								
GS 3.00° TCH 50								
6 NM 4.1 NM 1.4 NM								
ROOSE INT I-APC 2.4		I-APC 1.1						
CATEGORY		A	B	C	D			
S-ILS 1L		217-¾ 200 (200-¾)						
S-LOC 1L		500-¾ 483 (500-¾)			500-1½ 483 (500-1½)			
CIRCLING	600-1		680-1		1280-3		1300-3	
	564 (600-1)		644 (700-1)		1244 (1300-3)		1264 (1300-3)	
ROOSE FIX MINIMUMS (DUAL VOR RECEIVERS OR DME REQUIRED)								
S-LOC 1L		360-¾ 343 (400-¾)						
CIRCLING	600-1		680-1		1280-3		1300-3	
	564 (600-1)		644 (700-1)		1244 (1300-3)		1264 (1300-3)	



SW-2, 31 DEC 2020 to 28 JAN 2021

SW-2, 31 DEC 2020 to 28 JAN 2021