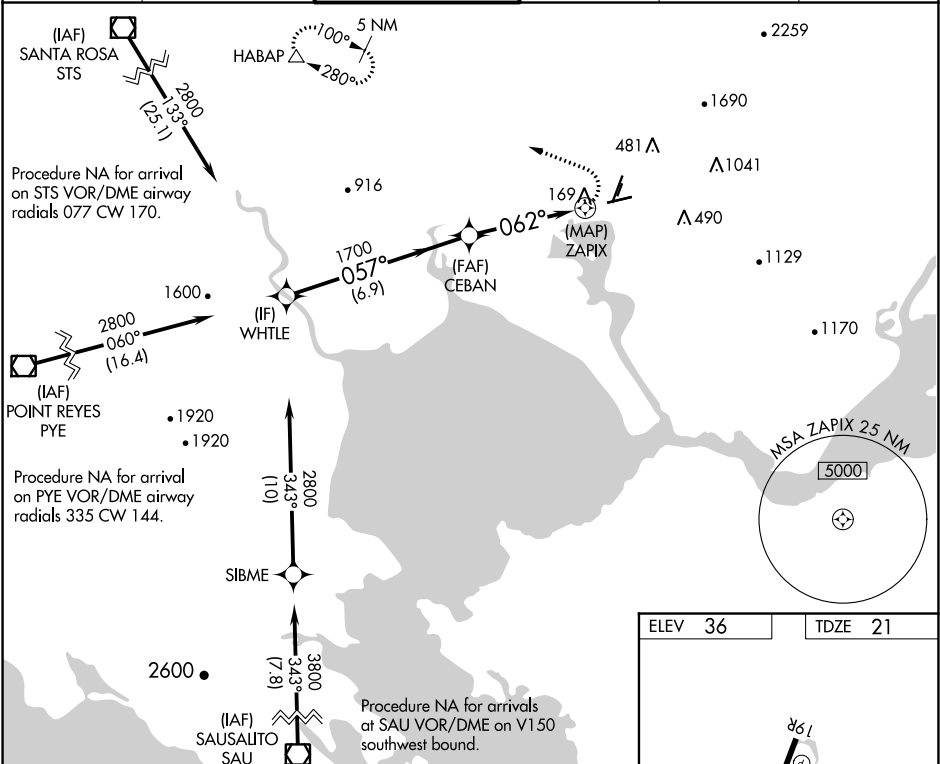


APP CRS	Rwy Idg	5008
062°	TDZE	21
	Apt Elev	36

RNAV (GPS) RWY 6
NAPA COUNTY (APC)

RNP APCH.	MISSED APPROACH: Climbing left turn to 4100 direct HABAP and hold, continue climb-in-hold to 4100. *Missed approach requires minimum climb of 355 feet per NM to 2300.
▼ Rwy 6 helicopter visibility reduction below 1 SM NA. ▲ Circling Cats A/B/C NA northeast of Rwys 19R and 24. ▲ Circling Cat D NA east of Rwy 19L-1R. Straight-in Rwy 6 NA at night, Circling Rwy 6 NA at night.	

ATIS 124.05	OAKLAND CENTER 127.8 353.5	NAPA TOWER ★ 118.7 (CTAF) 257.8	GND CON 121.7	CLNC DEL 127.85	UNICOM 122.95
----------------	-------------------------------	------------------------------------	------------------	--------------------	------------------



	WHTLE	CEBAN	4100	HABAP
	2800	1700	062°	ZAPIX
	6.9 NM	4.3 NM	0.8	
CATEGORY	A	B	C	D
LNAV MDA*	480-1	459 (500-1)	480-1 3/8	459 (500-1 3/8)
LNAV MDA	940-1 1/4	919 (1000-1 1/4)	940-2 1/2	919 (1000-2 1/2)
CIRCLING	940-1 1/4	904 (1000-1 1/4)	1280-3 1244 (1300-3)	1300-3 1264 (1300-3)

